

SHEE

FACADE ARCHITECTURAL SPECIFICATION

FACADE GLAZING

- GLASS: "GL21"
- DOUBLE GLAZING FACADE
- "U" GLASS LAMBERTS UNIT (TEMPERED GLASS)
- GLASS TYPE: P33 604
- GLASS SURFACE: CORD
- SANDBLASTING: SOLAR MATT
- U-VALUE: approx. 1,2W/m²K
- ANODIZED ALUMINIUM PROFILE COLOR: IRON GREY
- ANODIZED ALUMINIUM PROFILE COLOR # : PAL 7011
- ANODIZED ALUMINIUM PROFILE SURFACE: POWDER COATED
- MANUFACTURER: "LAMBERTS" www.lamberts.info

- GLASS: "GL-02"

FACADE GLAZING AND GLASS DOORS

GLASS ASSEMBLY / DESCRIPTION: 6mm - PUKINGTON SUNCOOL - R SILVER 50/27 T CLS
16mm - AIR 100%
4mm - CLEAR GLASS

REMARK: GLASS FACADE DETAILS ARE ONLY ARCHITECTURAL DECISION.
SHOP DRAWINGS MUST BE DONE BY FACADE ENGINEER / STRUCTURAL
ENGINEER AND TO BE APPROVED BY THE ARCHITECT PRIOR TO INSTALLATION

FACADE FINISH:

- ARCHITECTURAL TERRACOTTA PANELS
LINE NAME: CUSTOM
SURFACE: NATURAL, MEDIUM COMBED, FINE COMBED, POOLED (SEE DETAILED DRAWING)

4 DIFFERENT SHAPES OF PANELS

PNL-01 LENGTH: 450mm
 PNL-02 LENGTH: 450mm
 PNL-03 LENGTH: 450mm
 PNL-04 LENGTH: 450mm
 PANEL HEIGHT: 1500mm
 PANEL THICKNESS: 6mm
 SUBFRAME MATERIAL: ALUMINUM (BY TERRACOTTA PANEL MANUFACTURER)
 FIXING SYSTEM: CONCEALED
 JOINT WIDTH: approx. 10mm
 MANUFACTURER: "NSK" www.rbakintacotta.com

REMARK: PANEL DETAILS ARE ONLY ARCHITECTURAL DECISION.
SHOP DRAWINGS MUST BE DONE BY CONTRACTOR/FACADE ENGINEER/STEEL ERECTOR AND TO BE APPROVED BY THE ARCHITECT PRIOR TO INSTALLATION.

• HPL PANEL
 REFERENCE #: PN-06
 COLLECTION NAME: TRESIPA METCON / WOOD DECORS
 MODEL #: NW 16
 MATERIAL: HIGH PRESSURE LAMINATE
 COLOR: MILANO TERRA
 FINISH: SATIN
 SIZE: WIDTH 1200mm, LENGTH VARIOUS, THICKNESS 12mm
 CHARACTERISTIC: SINGLE SIDED DECORATIVE, GRADE - PANEL SHOULD BE FIRE RETARDANT
 ADHESIVE SYSTEM: ADHESIVE FRINGE,
 INVISIBLE (CONCEALED) FRINGING WITH ADHESIVE ON AN ALUMINUM SUBSTRATE
 MANUFACTURER: TRESIPA® - www.trespa.com

* HPL PANEL
 REFERENCE #: PN-06
 COLLECTION NAME: UNI COLOURS / METEON
 MODEL #: A21.7037
 MATERIAL: HIGH PRESSURE LAMINATE
 COLOR: STEEL GREY
 FINISH: SATIN
 SIZE: PANEL DIMENSIONS AS SHOWN ON THE DRAWINGS. THICKNESS 13mm
 CHARACTERISTIC: SINGLE SIDE DECORATIVE. GRACE - PANEL SHOULD BE FIRE RETARDING SYSTEM. AGAIN, FENG.
 FINISH: INVISIBLE (CONCEALED) FENGING WITH ADHESIVE ON AN ALUMINUM SUB-
 MANUFACTURER: TRESPAX www.trespax.com

- FACADE ALUMINUM PROFILE COLOR RAL 7011 IRON GREY

1. DECORATIVE BUILT-IN WALL LOUVER
 SYSTEMS- CONTINUOUS LOUVER SYSTEM (CLS)
 MODEL: L1NUG L100.01
 MATERIAL: EXTRUDED ALUMINIUM
 COLOR: IRON GREY
 COLOR # : PA17011
 DECORATIVE BUILT-IN WALL LOUVER INCLUDES EXHAUST SUPPLY BUILT-IN WALL LOUVER
 MANUFACTURE "TRENCO" - www.trenco.com
 REMARK: DIMENSIONS SHOULD BE TAKEN FROM ARCHITECTURAL DRAWINGS AND SHOULD BE DETERMINED
 BASED ON VPM INFORMATION
 500mm x 900mm SAMPLE SHOULD PROVIDED TO AND HEARDINGS FOR APPROVAL. PRIOR MANUFACTURE

2 CHIMNEY
NATION - STANFORD CITY

MATERIAL: CHROME/BLACK STEEL
COLOR: CARMINE RED
COLOR # : RAL 3002
SIZE: Ø700mm
HEIGHT FROM FFL: 1500mm
FOR MORE INFORMATION SEE MEP DRAWINGS

2 TYPE OF BRACING FOR WALL MOUNTED EMERGENCY LIGHTING L-17 WITH CENTRAL BATTERY SHOULD BE DONE BY CONTRACTOR/FACADE ENGINEER AND MUST BE APPROVED BY AN ARCHITECT

4 ALUMINUM COMPOSITE PANEL
COLLECTION NAME: REYNBOND
COLOR: IRON GREY
COLOR #:RAL7011
MANUFACTURER: "ALCOA" www.alcoa.com
FOR DETAILED INFORMATION SEE: EXTERIOR DETAILS

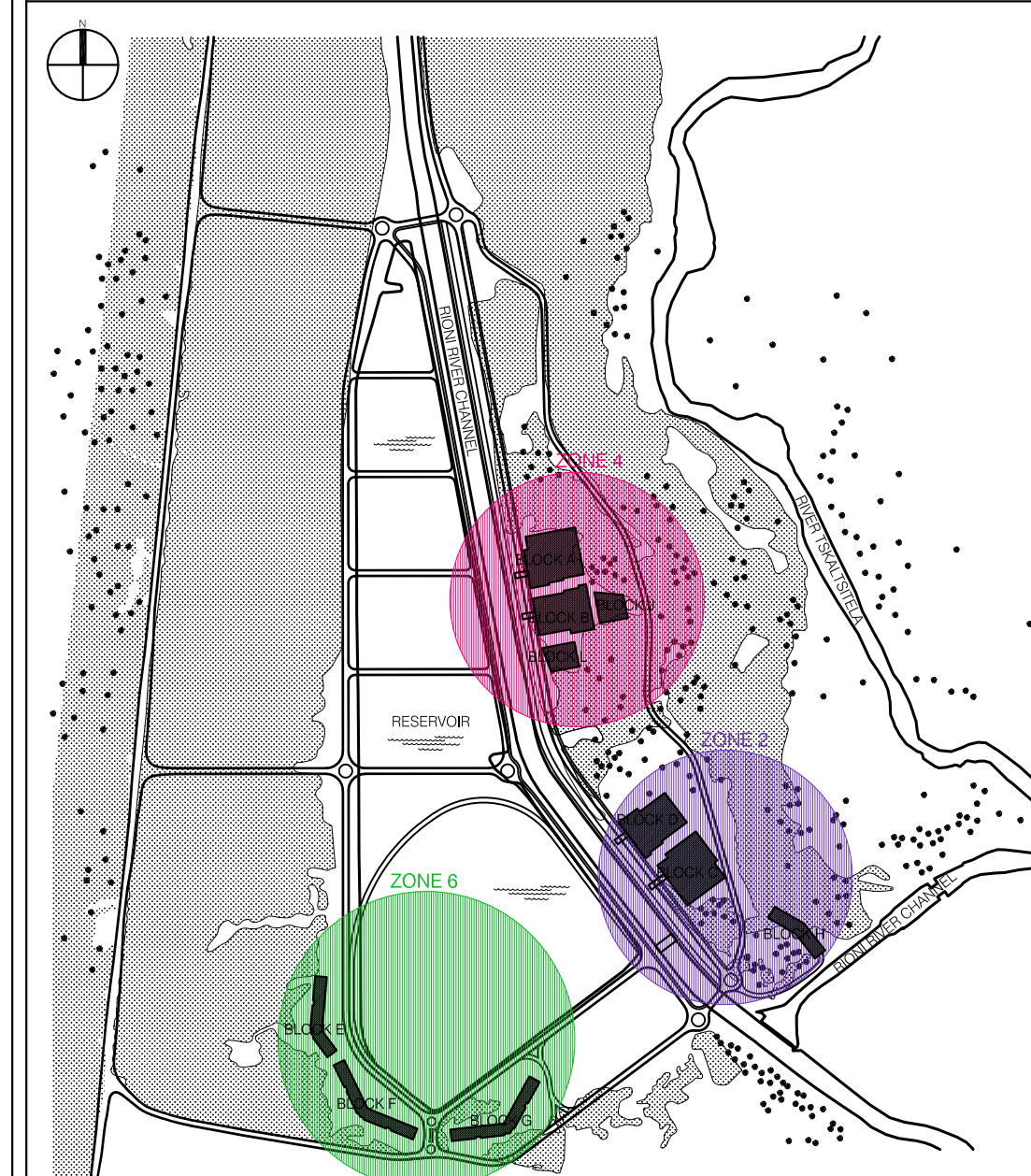
SHILL

1. GLASS FACADE AND PANEL DETAILS ARE ONLY ARCHITECTURAL DECISION.
SHOP DRAWINGS MUST BE DONE BY FACADE ENGINEER / STRUCTURAL ENGINEER AND TO BE APPROVED
THE ARCHITECT PRIOR TO INSTALLATION









WARNING!

THIS DRAWINGS IS FOR INFORMATION ONLY TO BE USED BY THE CONTRACTORS FOR ARCHITECTURAL INFORMATION OF INTERIOR & EXTERIOR CONDITIONS. IT HAS BEEN MADE FROM AVAILABLE INFORMATION. HOWEVER MEASUREMENTS ARE TO BE VERIFIED ON THE PROJECT SITE. THIS DRAWING MUST BE VERIFIED AND APPROVED PRIOR TO FINAL DETAILING AND FABRICATING. THIS DRAWING IS THE PROPERTY OF DEPHANT AND IS NOT TO BE REPRODUCED OR COPIED IN WHOLE OR IN PART. IT IS ONLY TO BE USED FOR THE PROJECT SITE SPECIFICALLY IDENTIFIED HEREIN AND IS NOT TO BE USED ON ANY OTHER PROJECT. IT IS TO BE RETURNED UPON REQUEST.

[illegible]

REVISION A, B, C, D.

-  DOOR TYPE HAS BEEN CHANGED
-  DOOR NUMBER HAS BEEN CHANGED
-  DOOR LOUVER SIZE AND LOCATION HAS BEEN CHANGED
-  DOOR HAS BEEN ADDED
-  DOOR LOUVER SIZE HAS BEEN CHANGED
-  EMERGENCY LIGHTING L-17 HAS BEEN ADDED

SYMBOLS / DESCRIPTION	
Δ	Change in value
α	Alpha factor
β	Beta factor
γ	Gamma factor
δ	Delta factor
ϵ	Epsilon factor
ζ	Zeta factor
η	Eta factor
θ	Theta factor
ι	Iota factor
κ	Kappa factor
λ	Lambda factor
μ	Mu factor
ν	Nu factor
ξ	Xi factor
\omicron	Omicron factor
π	Pi factor
ρ	Rho factor
σ	Sigma factor
τ	Tau factor
υ	Upsilon factor
ϕ	Phi factor
χ	Chi factor
ψ	Psi factor
ω	Omega factor
φ	Phi factor
ϑ	Theta factor
ϖ	Pi factor
ς	Sigma factor
ζ	Zeta factor
η	Eta factor
θ	Theta factor
ι	Iota factor
κ	Kappa factor
λ	Lambda factor
μ	Mu factor
ν	Nu factor
ξ	Xi factor
\omicron	Omicron factor
π	Pi factor
ρ	Rho factor
σ	Sigma factor
τ	Tau factor
υ	Upsilon factor
ϕ	Phi factor
χ	Chi factor
ψ	Psi factor
ω	Omega factor
φ	Phi factor
ϑ	Theta factor
ϖ	Pi factor
ς	Sigma factor
ζ	Zeta factor
η	Eta factor
θ	Theta factor
ι	Iota factor
κ	Kappa factor
λ	Lambda factor
μ	Mu factor
ν	Nu factor
ξ	Xi factor
\omicron	Omicron factor
π	Pi factor
ρ	Rho factor
σ	Sigma factor
τ	Tau factor
υ	Upsilon factor
ϕ	Phi factor
χ	Chi factor
ψ	Psi factor
ω	Omega factor
φ	Phi factor
ϑ	Theta factor
ϖ	Pi factor
ς	Sigma factor
ζ	Zeta factor
η	Eta factor
θ	Theta factor
ι	Iota factor
κ	Kappa factor
λ	Lambda factor
μ	Mu factor
ν	Nu factor
ξ	Xi factor
\omicron	Omicron factor
π	Pi factor
ρ	Rho factor
σ	Sigma factor
τ	Tau factor
υ	Upsilon factor
ϕ	Phi factor
χ	Chi factor
ψ	Psi factor
ω	Omega factor
φ	Phi factor
ϑ	Theta factor
ϖ	Pi factor
ς	Sigma factor
ζ	Zeta factor
η	Eta factor
θ	Theta factor
ι	Iota factor
κ	Kappa factor
λ	Lambda factor
μ	Mu factor
ν	Nu factor
ξ	Xi factor
\omicron	Omicron factor
π	Pi factor
ρ	Rho factor
σ	Sigma factor
τ	Tau factor
υ	Upsilon factor
ϕ	Phi factor
χ	Chi factor
ψ	Psi factor
ω	Omega factor
φ	Phi factor
ϑ	Theta factor
ϖ	Pi factor
ς	Sigma factor
ζ	Zeta factor
η	Eta factor
θ	Theta factor
ι	Iota factor
κ	Kappa factor
λ	Lambda factor
μ	Mu factor
ν	Nu factor
ξ	Xi factor
\omicron	Omicron factor
π	Pi factor
ρ	Rho factor
σ	Sigma factor
τ	Tau factor
υ	Upsilon factor
ϕ	Phi factor
χ	Chi factor
ψ	Psi factor
ω	Omega factor
φ	Phi factor
ϑ	Theta factor
ϖ	Pi factor
ς	Sigma factor
ζ	Zeta factor
η	Eta factor
θ	Theta factor
ι	Iota factor
κ	Kappa factor
λ	Lambda factor
μ	Mu factor
ν	Nu factor
ξ	Xi factor
\omicron	Omic

TECHNICAL UNIVERSITY OF KUTAIS

PROVE

ZONE 4, BLOCK A
FACULTY OF MANAGEMENT
BUILDING FACADE,
FACADE PANEL TYPES &
INSTALLATION METHODOLOGY
C-P GRIDS / P-M GRIDS

12/10/2020	REVISION
01/05/2020	REVISION
17/02/2020	REVISION
30/09/2019	100% CONSTRUCTION DOCUMENTATION
30/01/2019 / 25/09/2019 / 22/07/2019	PROCESS
20/12/2018	50% DESIGN DEVELOPMENT / STAG
08/10/2018	100% SCHEMATIC DESIGN / STAG
19/06/2018	100% SCHEMATIC DESIGN / STAG

DATE		REVISION	
CONTRACT No.	001	FILE NAME	TRK & A1

PROJECT No.	177-001A
SCALE / SHEET SIZE	1:100 / 900x1800mm

DRAWN	<i>A. J. [Signature]</i>	T.J.
CHECKED	<i>[Signature]</i>	T.M.

TUK A A-1204

REVISION	E
DATE	30.09.2000

APPROVED	SHEET
----------	-------

TUK A A-1204

SHEET 8