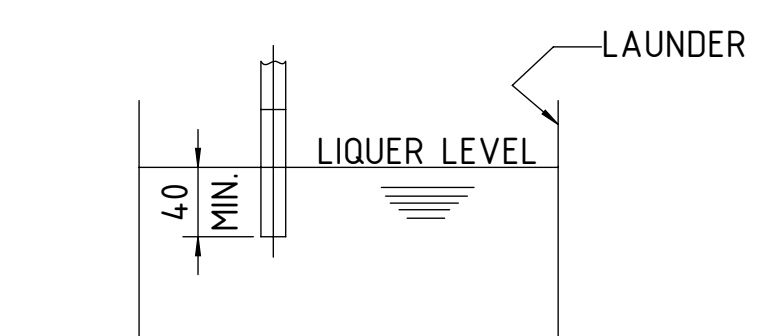
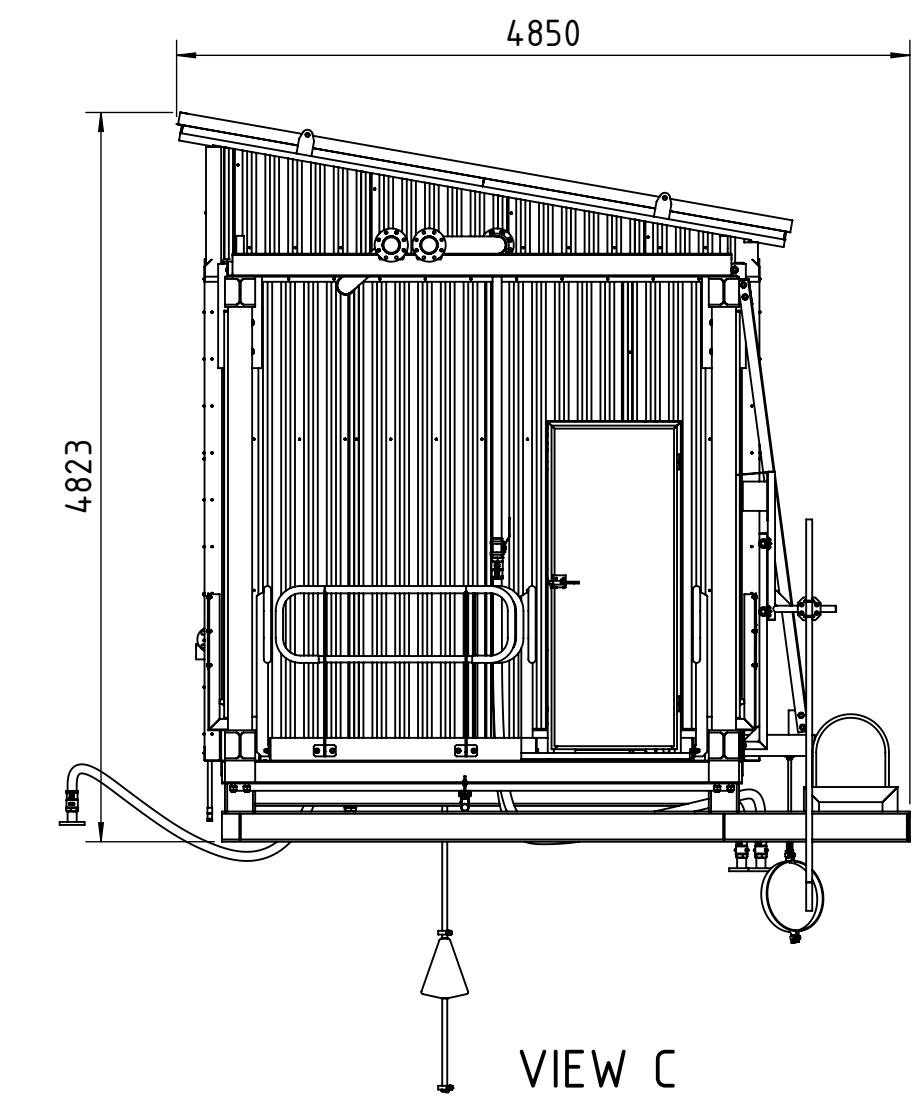
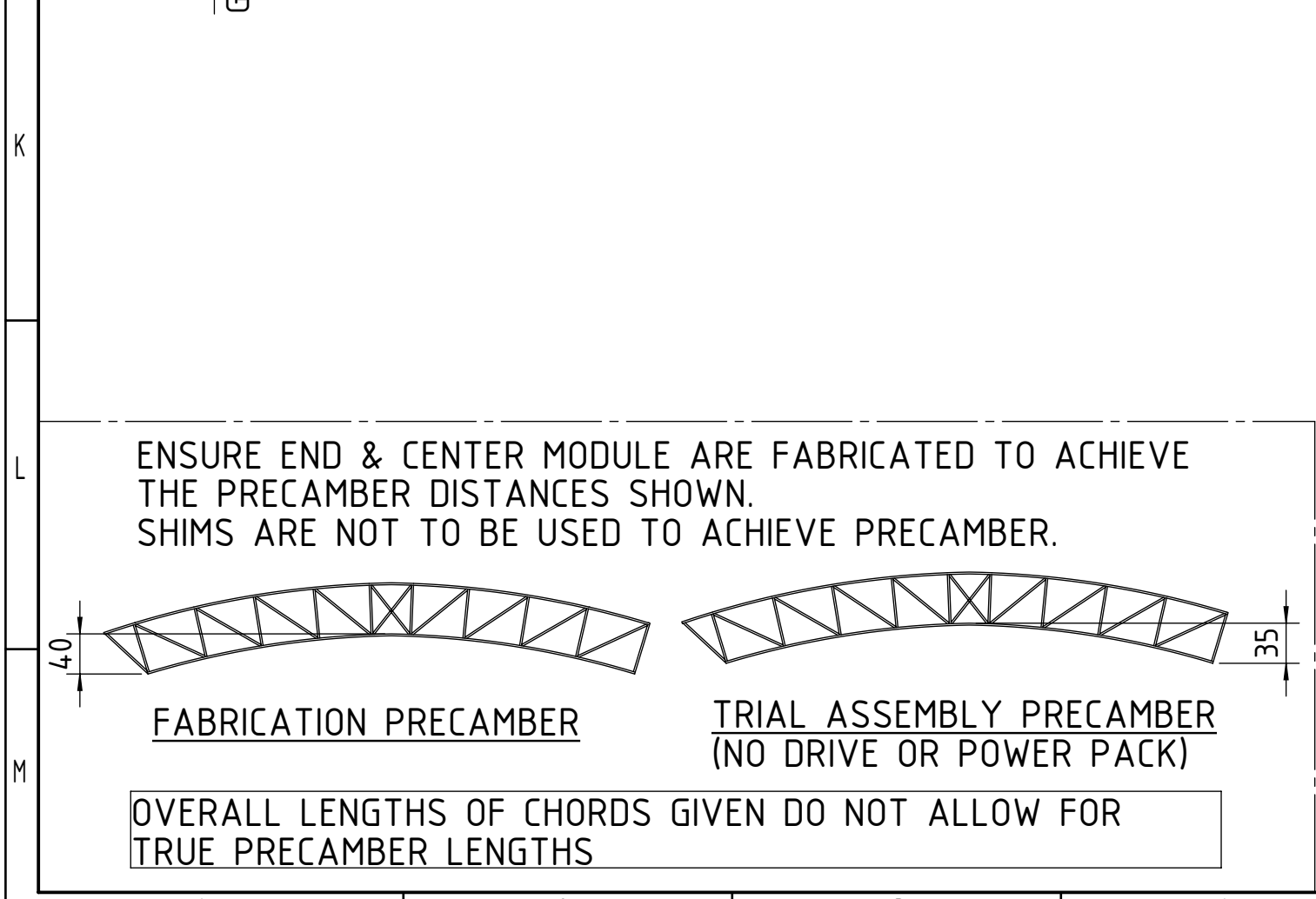


REFER TO OU650139761 GENERAL NOTES FOR MATERIAL, BOLT, WELD & TOLERANCE SPECIFICATION.



INSTALLATION REQUIREMENT
- TURBIDITY SENSOR 40mm BELOW LAUNDR LIQUID LEVEL

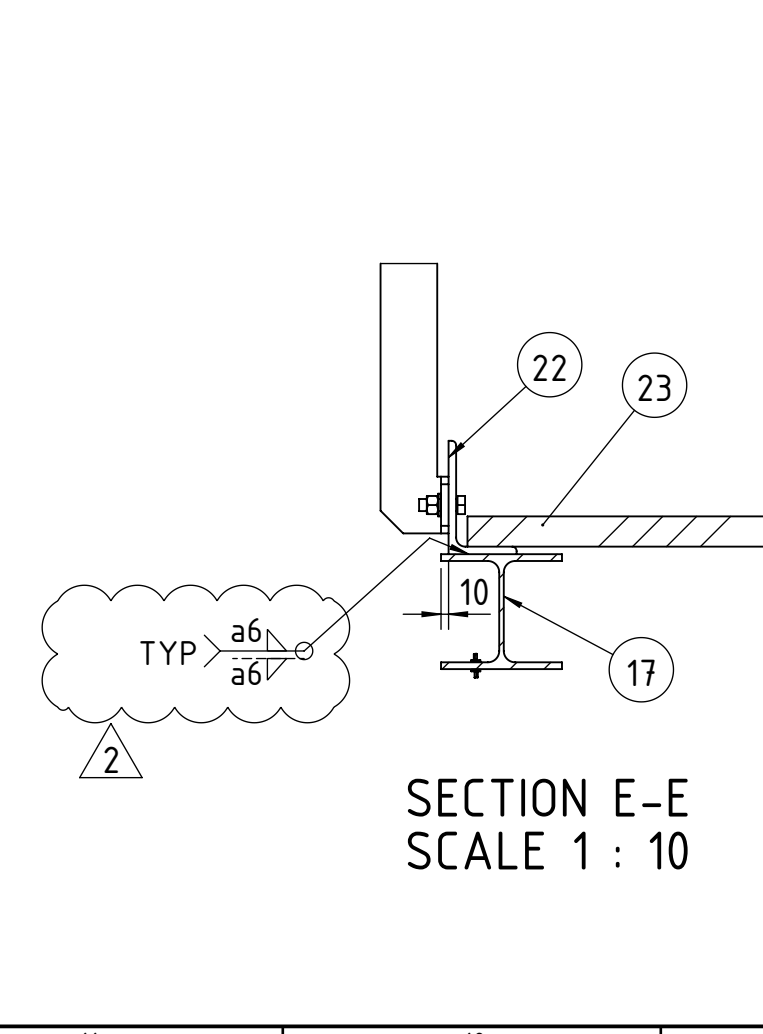
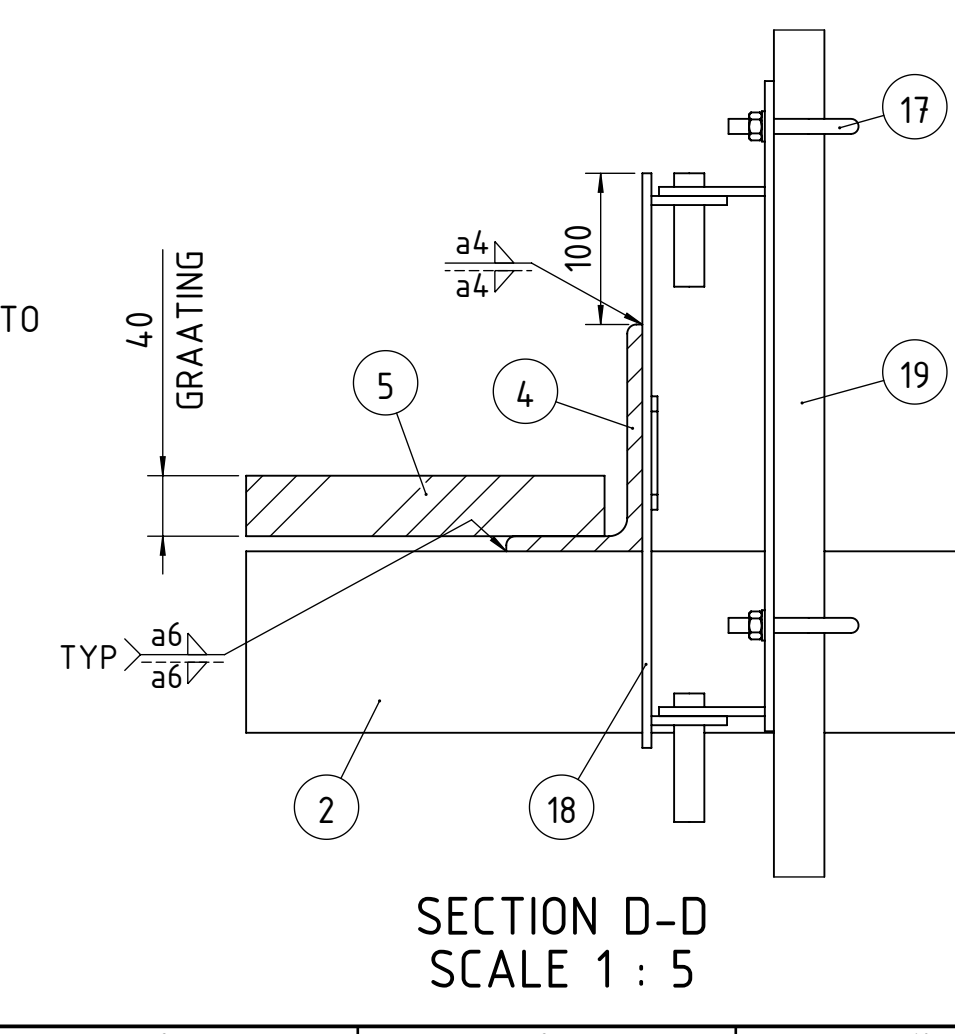
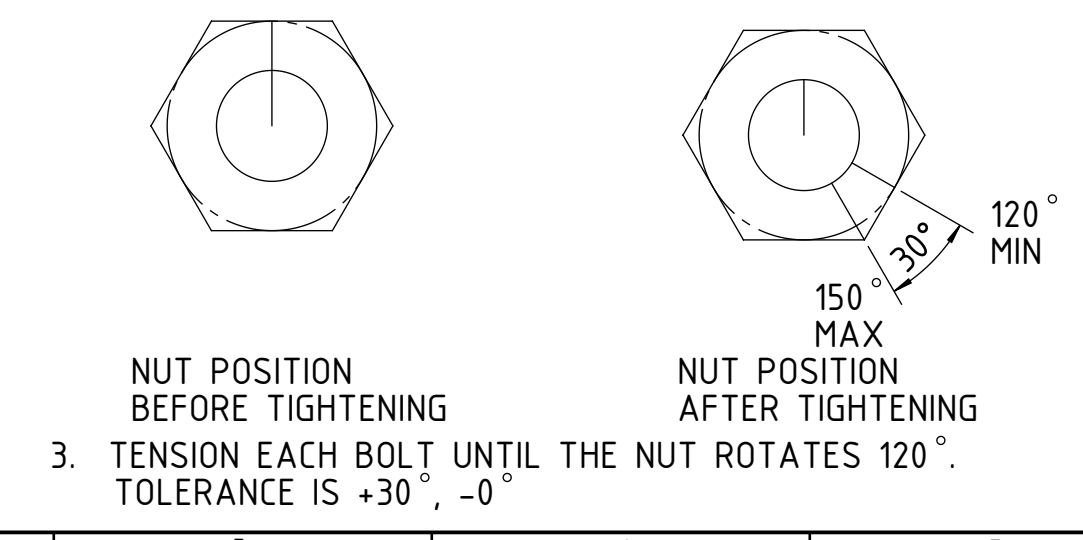
34	WASHER ISO 7089 - M12 - 200HV - 12n	2	0.0	S15280	
33	HEXAGON NUT ISO 4032 - M12 - 8 - 12n	2	0.0	N048003449	
32	HEX HEAD SCREW ISO 4014 - M12x35 - 8.8 12n	2	0.0	N048004402	
31	HEX HEAD SCREW ISO 4014 - M16x45 - 8.8 12n	4	0.1	N048004452	
30	M24 HEX HEAD BOLT x 70 LG - GR 8.8	8	0.4	N032017029	
29	WASHER ISO 7089 - M16 - 200HV - 12n	12	0.0	S15281	
28	HEXAGON NUT ISO 4032 - M16 - 8 - 12n	8	0.0	N048003451	
27	HEX HEAD SCREW ISO 4014 - M16x50 - 8.8 12n	8	0.1	N048004453	
26	M24 FLAT WASHER - GR 8.8	56	0.0	N032017377	
25	M24 HEX NUT - GR 8.8	48	0.2	N032017336	
24	M24 HEX HEAD BOLT x 90 LG - GR 8.8	40	0.5	N032017033	
23	M30 FLAT WASHER - GR 8.8	24	0.0	N032017338	
22	M30 HEX NUT - GR 8.8	24	0.4	N032017337	
21	M30 HEX HEAD BOLT x 95 LG - GR 8.8	24	0.5	N032017067	
20	TURBIDITY SENSOR ASSEMBLY	0U601803791	1	4.9	N031241376
19	BED LEVEL PROBE		1	9	
18	MOUNTING BRACKET	0U601750606	1	1.8	N031235045
17	SWIVEL MOUNT	0U601784449	1	2.8	N031235049
16	SUPPORT ASSEMBLY	0U601789921	1	354	N031236812
15	SUPPORT ASSEMBLY	0U601784434	1	4.3	N031235035
14	FLOC HEADER	0U601783287	1	541	N031235101
13	FROTH SPRAY PIPE	0U601783222	1	107	N031235027
12	ROOF ASSEMBLY	0U601774758	1	1513	N031234753
11	SHELTER	0U601772026	1	1069	N031234747
10	SIGN MEDIUM	0U601750596	2	46	N031234565
9	OIL DRAIN	0U601750572	1	4.3	N031234962
8	KICK PLATE	0U601750599	1	4.9	N031234955
7	HYDRAULIC POWER UNIT	0U601750600	1	1200	N032009699
6	MONORAIL ASSEMBLY	0U601750586	1	2022	N031233696
5	GRATING	0U601750571	1	2067	N031234724
4	HANDRAILING	0U601750582	1	1784	N031233749
3	BRIDGE END MODULE	0U601780102	1	4.062	N031233953
2	BRIDGE END MODULE	0U601750570	1	44.78	N031231906
1	BRIDGE CENTER MODULE	0U601750546	1	8783	N031234951

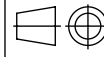


BOLTING PROCEDURE

TURN-OF-NUT OR PART-TURN METHOD OF TENSIONING

1. INSTALL ALL OF THE BOLTS AND TIGHTEN TO BRING THE PLATES INTO FIRM CONTACT USING AN ORDINARY WRENCH/SPANNER OR A FEW IMPACTS FROM AN IMPACT WRENCH (SNUG TIGHT).
2. MARK EACH NUT AND BOLT AT THE SAME LOCATION.
3. TENSION EACH BOLT UNTIL THE NUT ROTATES 120°. TOLERANCE IS +30°, -0°



DIMENSIONS & BASIC MATERIAL							WEIGHT	
							28292 kg	
0	welyu	13.12.2021	pasraj	17.12.2021	juksik	17.12.2021	FOR FABRICATION	
1	welyu	28.03.2022	auKau	06.04.2022	juksik	06.04.2022	FASTENERS CHANGED	
2	tingao	04.08.2022	henkal	04.08.2022	juksik	05.08.2022	ADDED NEW VIEW FOR HANDRAIL	
REV.	NAME	DATE	NAME	DATE	NAME	DATE	REVISION TEXT	
	PREPARED		CHECKED		APPROVED			
STATUS					UNITS	SCALE	SIZE	
					mm	1:50	A1	
CUSTOMER					PROJECT PHASE			SITE NO.
PROJECT NAME					CUSTOMER DOCUMENT NO.			
Chemitec RMG Madneuli 2x26m HCT								
REPLACED BY					REPLACES			LANGUAGE
								EN
Metso:Outotec					DOCUMENT TITLE			
					INSTALLATION DRAWING			
EQUIPMENT NO.					BRIDGE ASSEMBLY			
					THICKENER FULL SPAN TRUSS BRIDGE / 26m			
PROJECT ID	PLANT CODE	PLANT UNIT CODE		DOCUMENT TYPE	COUNTING NO.	REVISION	SHEET OF SHEETS	
902745				MTC03		2	1 / 2	
THIS INFORMATION IS CONFIDENTIAL AND PROPRIETARY TO METSO OUTOTEC CORPORATION OR ITS SUBSIDIARIES (METSO OUTOTEC) AND IS PROTECTED BY TRADE SECRET, COPYRIGHT AND/OR OTHER LAWS. IT MAY NOT BE REPRODUCED, COPIED OR DISCLOSED WITHOUT THE WRITTEN CONSENT OF METSO OUTOTEC. ALL RIGHTS RESERVED.							DOCUMENT ID	
							OU601750545	

