

1

2

3

4

5

6

7

8

EXTERNAL SIDE VIEW

RIGHT SIDE

LEFT SIDE

CEILING

WALL

FRONT

FRONT

D

D

1100
12181200
1310

3100 *

101

1500

**

* - MINIMUM CEILING HEIGHT

** - MINIMUM DISTANCE BETWEEN THE WALL
AND THE BACK SIDE OF THE PANEL*** - MINIMUM NECESSARY SPACE IN FRONT
OF THE PANEL (MAINTENANCE AND OPERATION)CUSTOMER: **METSO OUTOTEC**END USER: **RICH METALS GROUP (RMG)**

SAG MILL

MVW3000A0180V063

MECHANICAL DRAWING

10009195207-PRJ-00/MD

weg

AL

SH. 6

OF 14 SHS.

RLM

LOC

CHANGE LOG

DRAWN

APPROVED

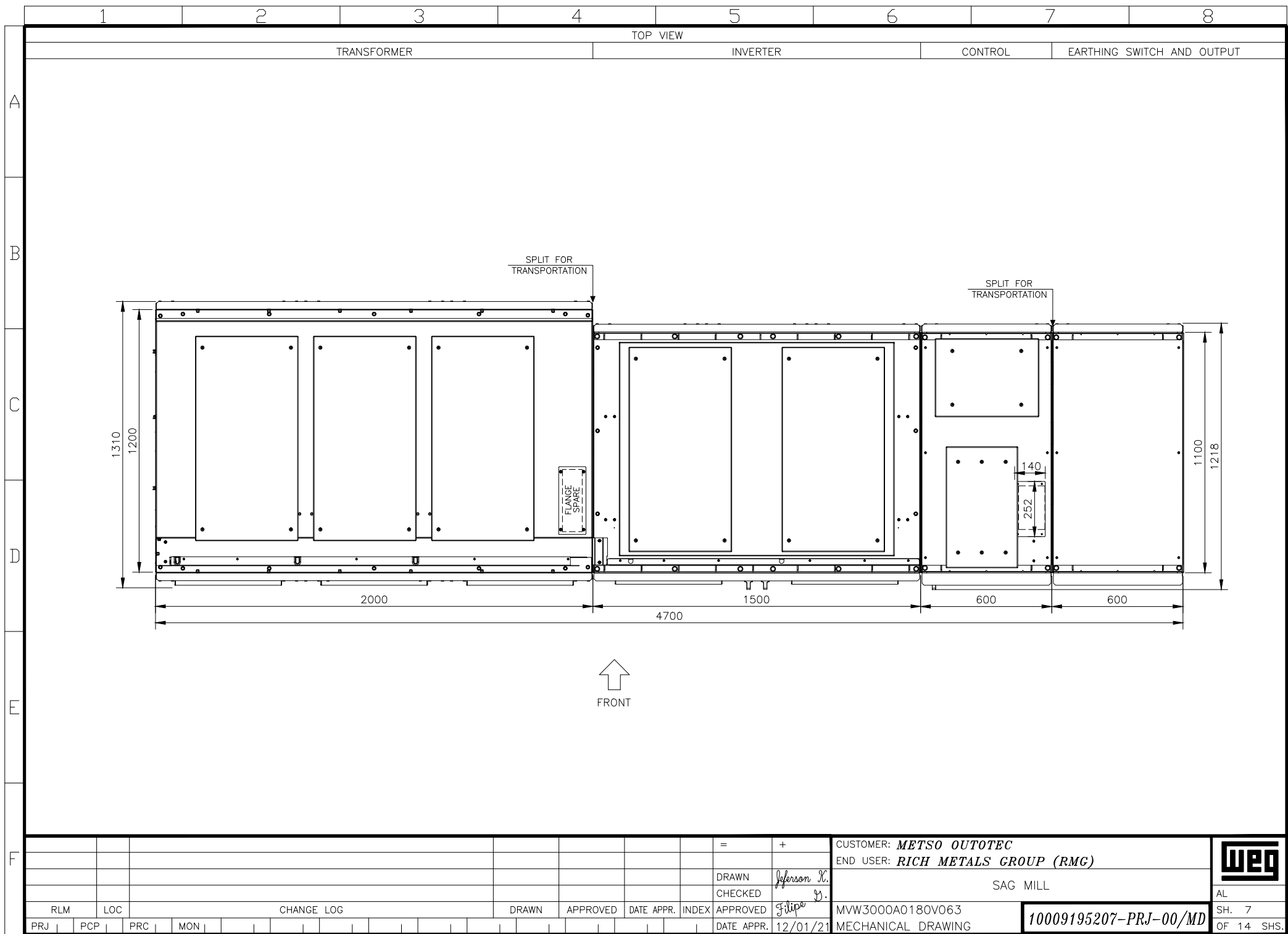
DATE APPR.

INDEX

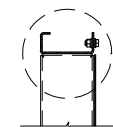
APPROVED

DATE APPR.

12/01/21



DETAIL Y
SECTION E-E

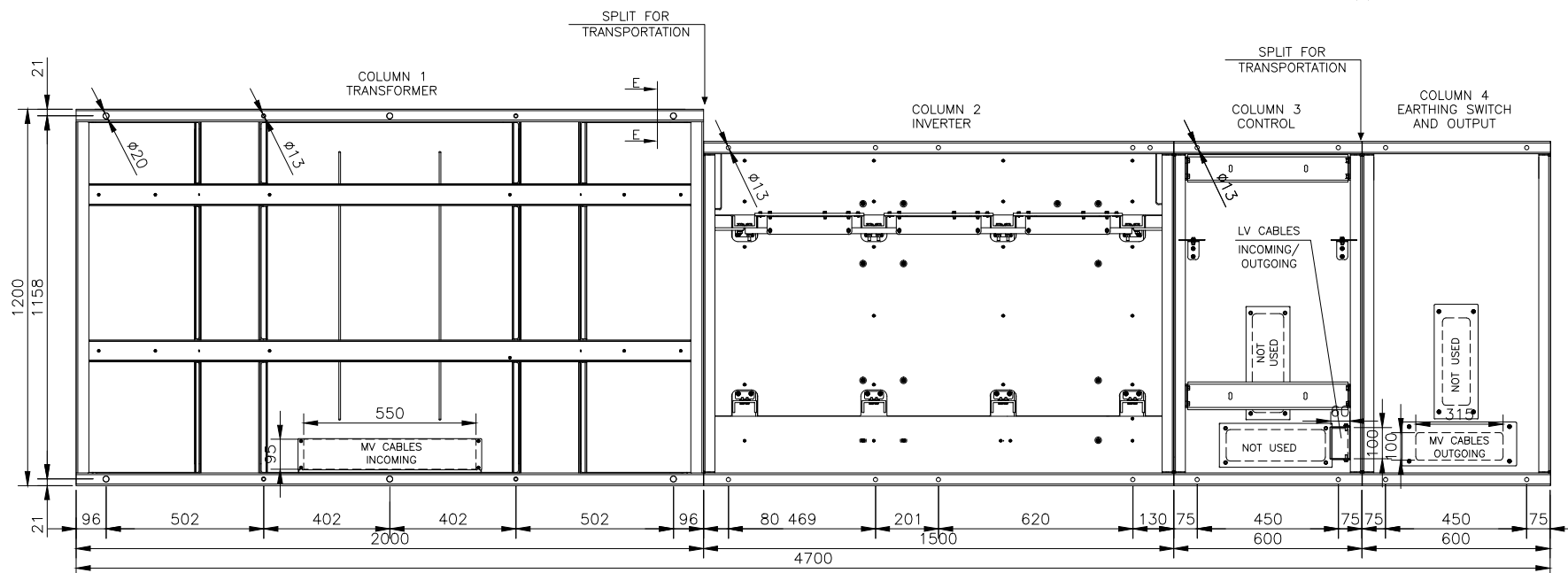


NOTES: 1 - REMOVED FROM STANDARD TBG-269a.

2 - THE MAXIMUM LOAD TRACTION ADMISSIBLE PER ANCHOR BOLT ON CONCRETE FLOOR IS 2800kgf.

3 - ALL DIMENSIONS IS ON MILLIMETERS (mm), EXCEPT WHERE INDICATED ANOTHER UNITY.

THE PANEL SHOULD BE FIXED IN A FLAT AND LEVELED PLACE (FF35/FL25 – ACCORDING TO STANDARD ASTM E 1155).



FRONT

[illegible]