

This drawing must not without our permission be copied, imparted to third party or otherwise unauthorizedly used. Contravention will be prosecuted.

Outotec

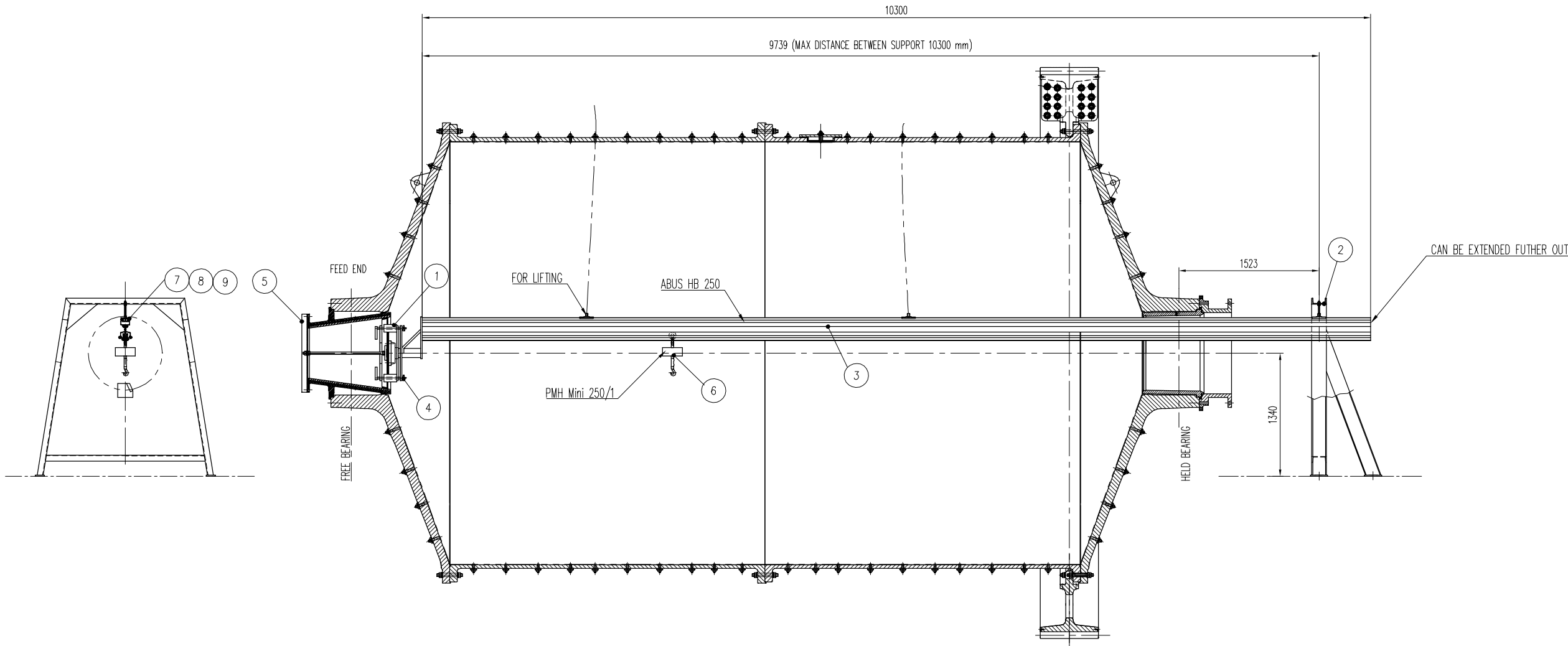
Outotec's order no.


Released by
12220528

A
B
C
D
E
F
G
H
J
K

123456789101112131415

Δ Revision			
No.		Date	Sign.
1	ITEM 6,7,8,& 9	18.11.2015	SS



	8	9	WASHER M12		ISO 7089	HV200		
	8	8	NUT M12		ISO 4032	0.8		
	8	7	HEX HEAD BOLT M12 x 95		ISO 4017	8.8		
	1	6	PMH Mini 250/1		PMH Mini			
	1	5	LOCKING BRACKET		12220529-A	St.	19	
	2	4	LOCKING PIN		32213775-A	St.	1.5	
	1	3	BEAM		12220526-A	St.	XXX	
	1	2	BRACKET		12220526-B	St.	229	
	1	1	SPIDER		12220527-A	St.	100	
B	Part	A	Item No.	Description	Code no./Part. No.	Material	kg/no	
Remove sharp edges				Dimensions without tol. indication are:				
✓ indicates Ra in µ (ISO 1302)				for machining ISO 2768 - mK				
				for welding ISO 13920 - BF				
Outotec				Tolerance system ISO		Scale 1:25	1st order no. 14-06-BM	Replace
Design. SS		Drawn SS		Check. Bj	Appr. KAV	Certified	Date 11.02.2015	Replace by
PRIMARY BALL MILL				CAD ORIGINAL			Reg.no.	Comparable drwg.
ø4,6x6,7m EGL				Changes shall be done in cad			Drwg.No.	Rev.
LINER HANDLER, ASSEMBLY							12220528	1