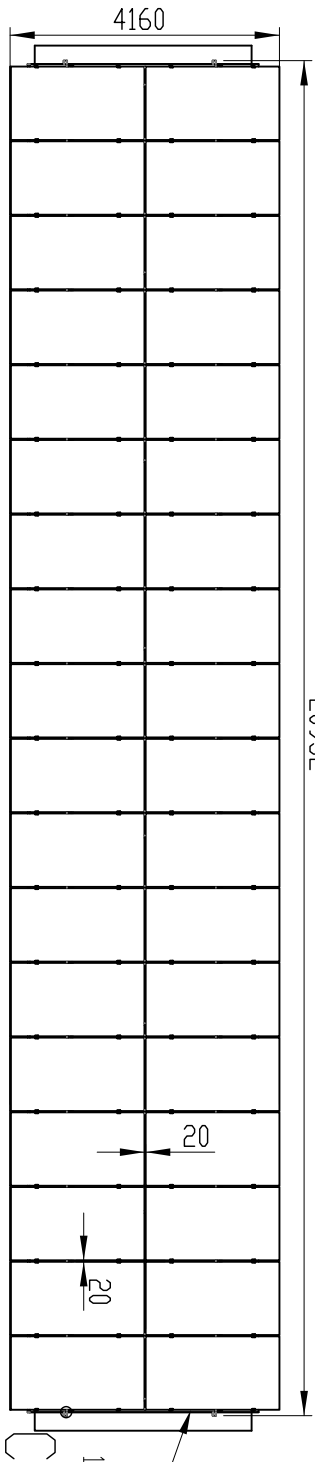
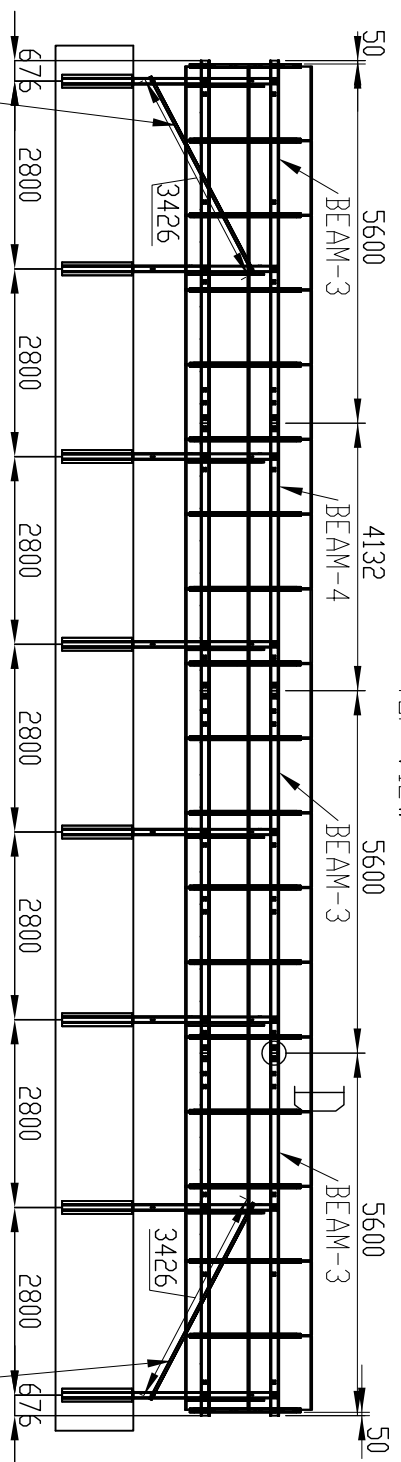


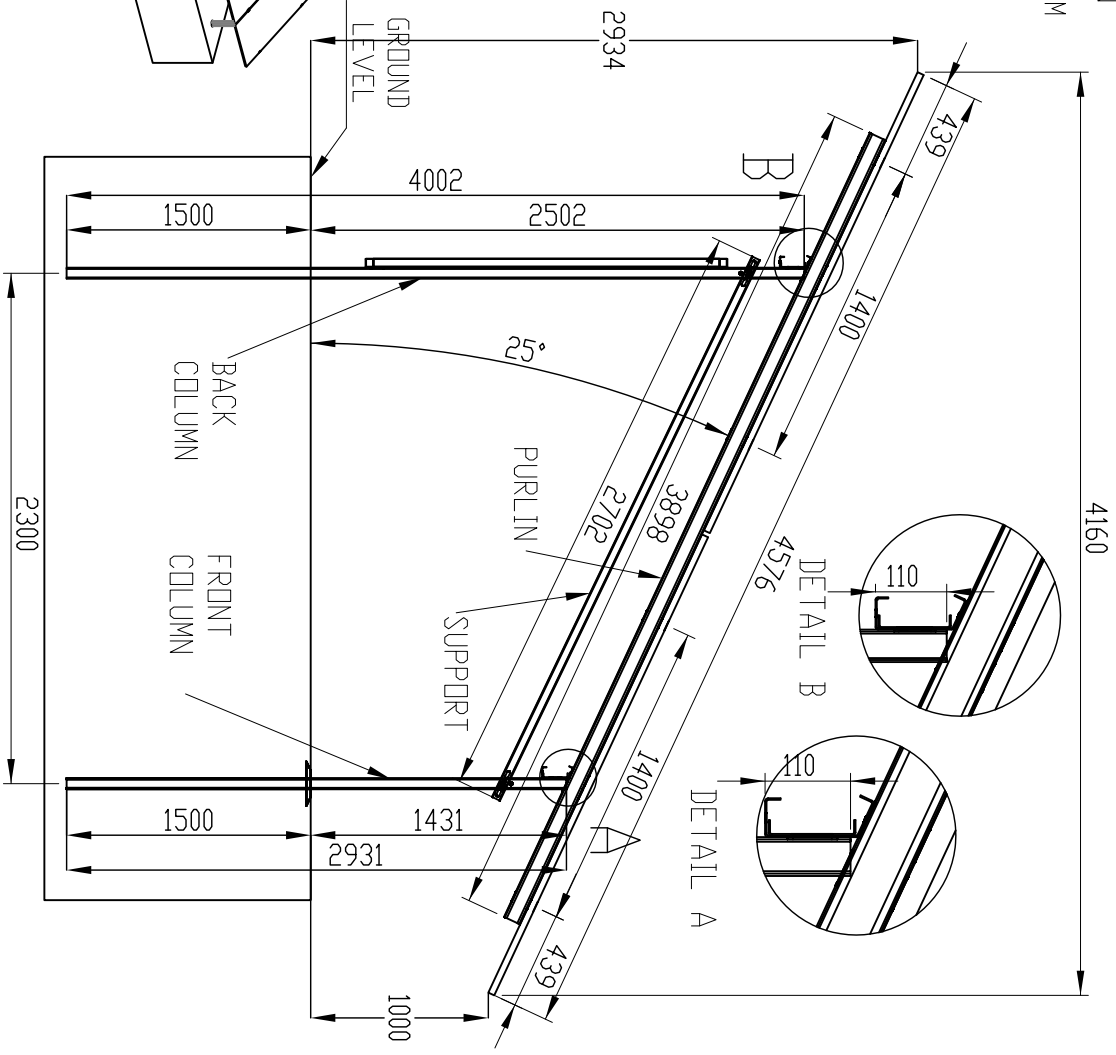
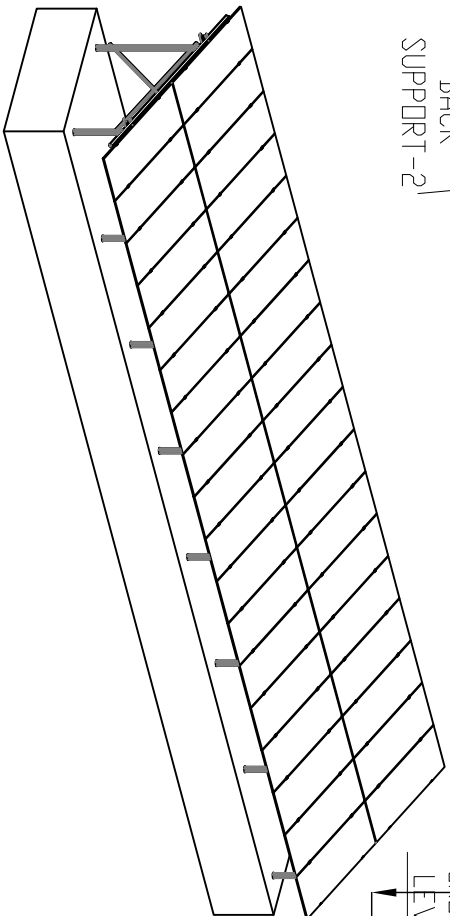
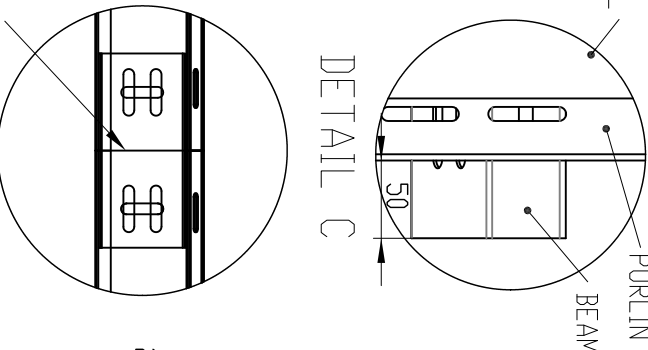
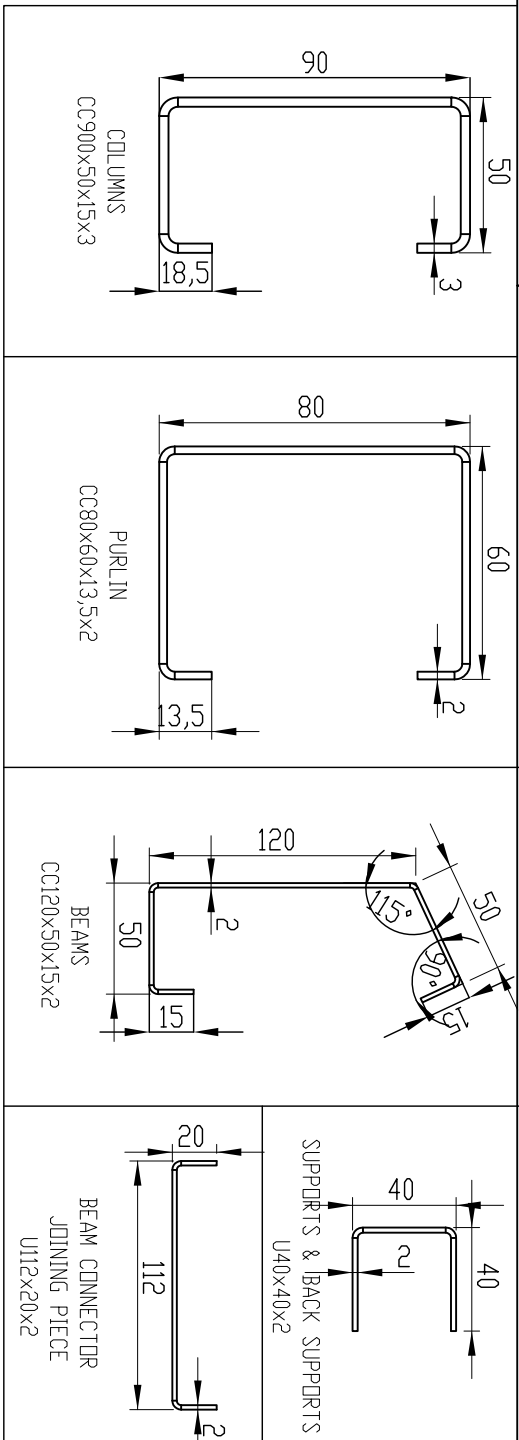
FRONT VIEW  
TOTAL  
BEAM LENGTH 20932



PV PANEL  
DIMENSIONS  
1134x2278x30



BACK VIEW  
BACK  
SUPPORT-2



COMPONENT	NAME	MATERIAL	COATING	QUANTITY PER TABLE(pcs.)
FRONT COLUMN	CC90x50x18,5x3	S355	H06	8
BACK COLUMN	CC90x50x18,5x3	S355	H06	8
PURLIN	CC80x60x13,5x2	S355	H06	19
BEAM-3	CC120x50x15x2	S355	H06	6
BEAM-4	CC120x50x15x2	S355	H06	2
SUPPORT	U40x40x2	S235	H06	8
BACK SUPPORT-2	U40x40x2	S235	H06	2
BEAM CONNECTOR JOINING PIECE	U112x20x2	S235	H06	6
END CLAMP	H30 L50 6063-T6	ALU	-	8
MID CLAMP	L50 6063-T6	ALU	-	68
BOLTS	M8x50 BOLT DIN912	STEEL 8.8	LAK	76
BOLTS	M8x25 BOLT DIN933	STEEL 8.8	LAK	38
FLANGED NUT	M8 DIN 6923	STEEL 8.8	LAK	114
WASHER	M8 DIN 125	STEEL 8.8	LAK	152
SPRING WASHER	M8 DIN 127	STEEL 8.8	LAK	114
BOLTS	M12x30 DIN 933	STEEL 8.8	LAK	76
FLANGED NUT	M12 DIN 6923	STEEL 8.8	LAK	76
WASHER	M12 DIN 125	STEEL 8.8	LAK	152
SPRING WASHER	M12 DIN 127	STEEL 8.8	LAK	76