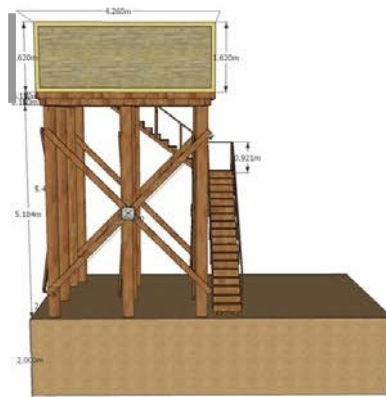
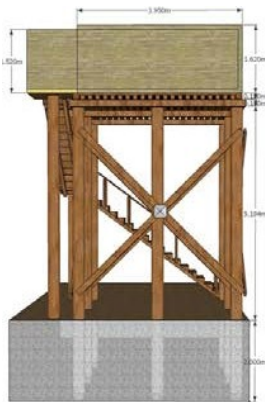
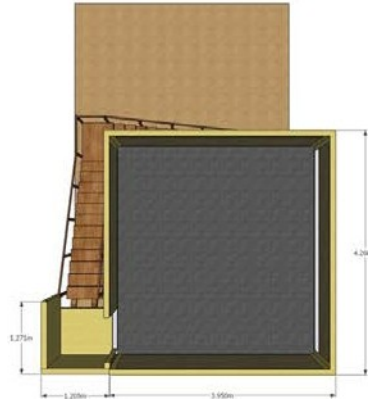
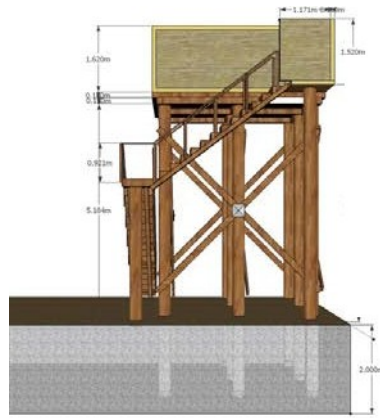
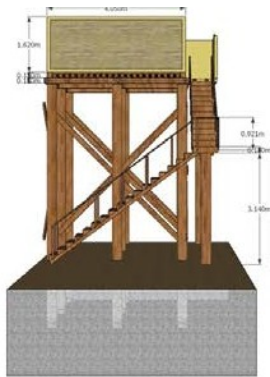
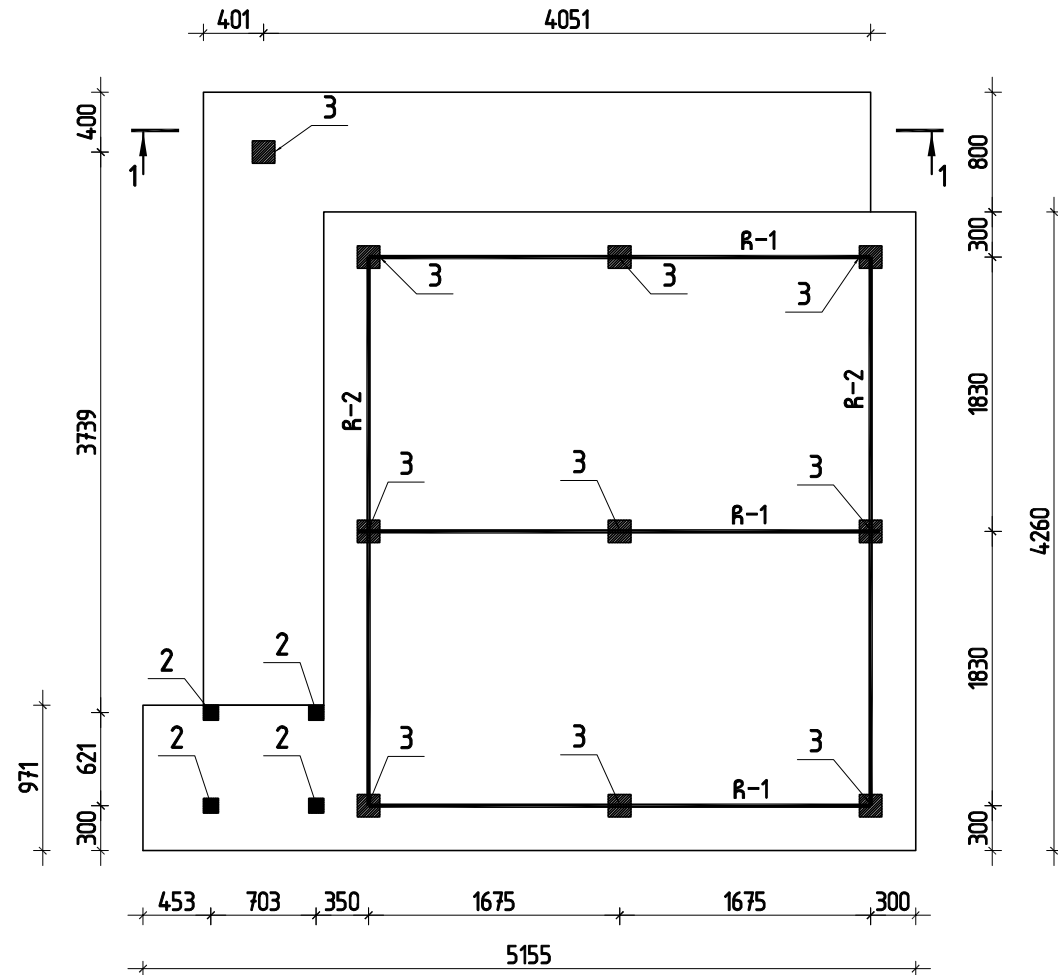


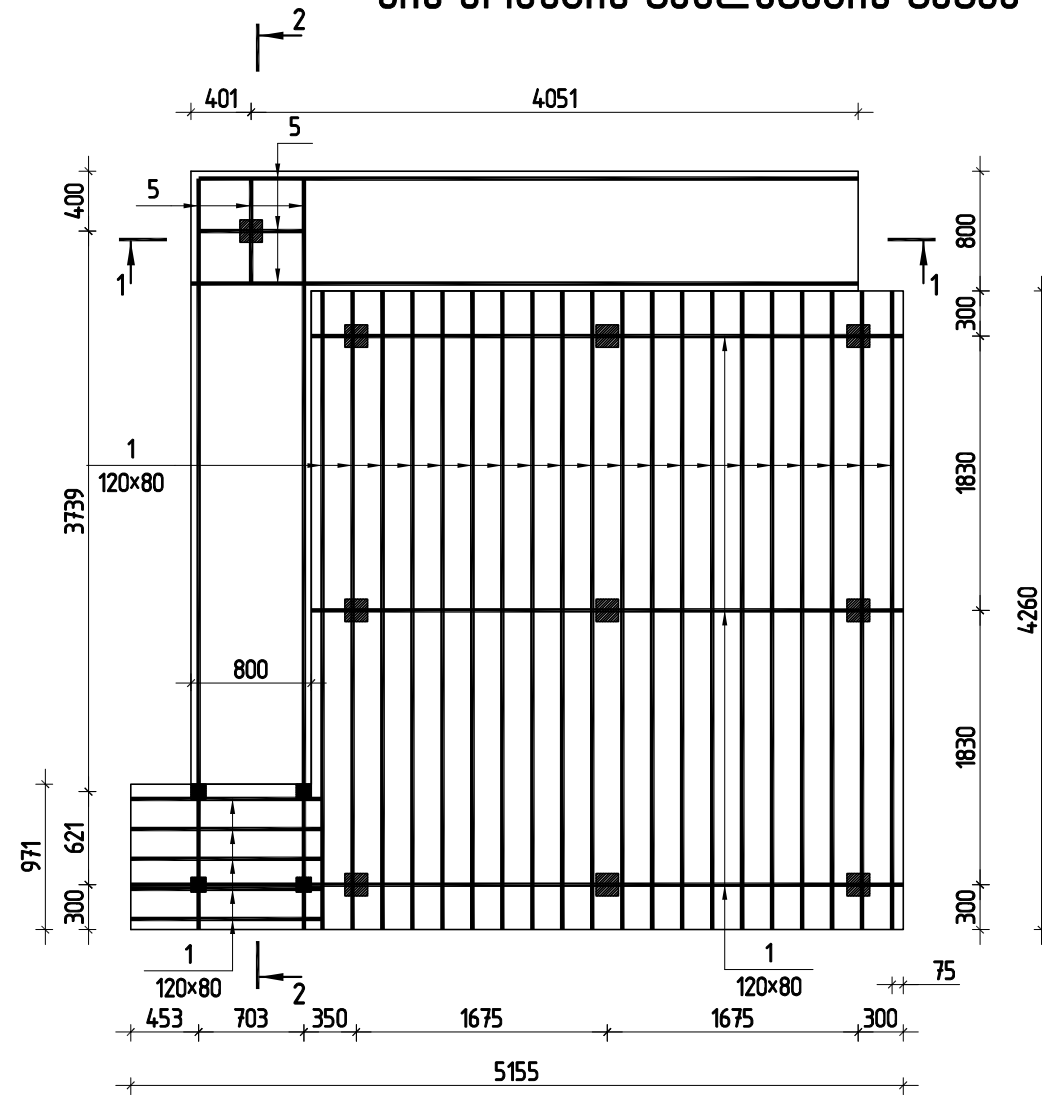
T



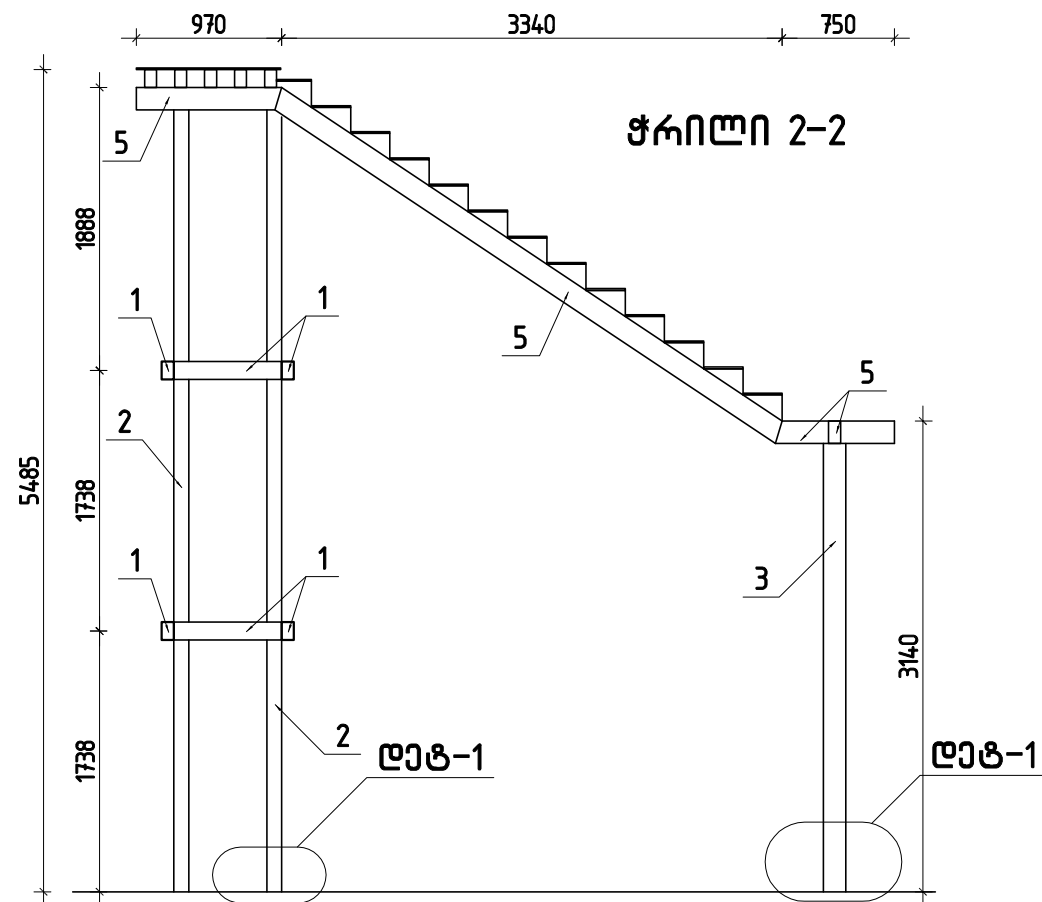
ხის ჩარჩოების განლაგების გეგმა



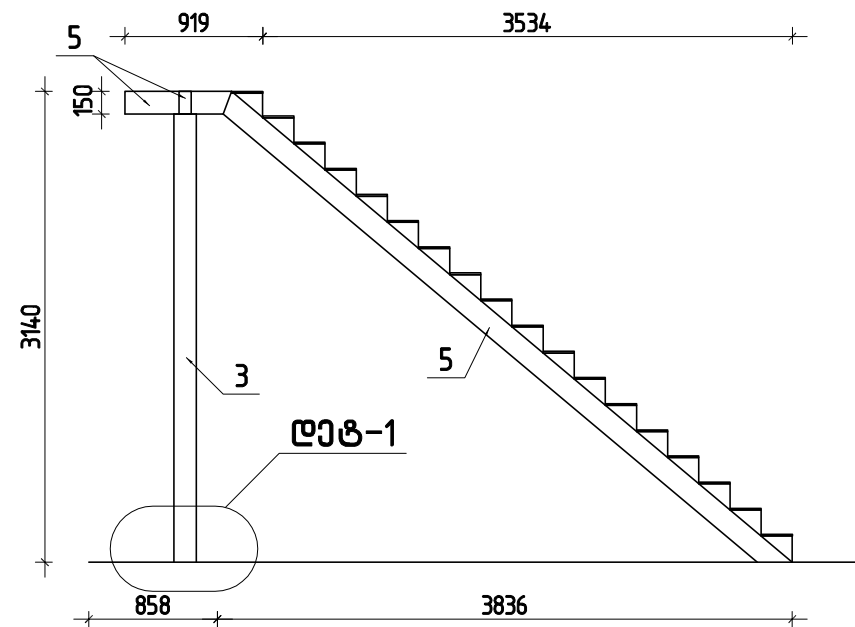
ხის კოჭების განლაგების გეგმა



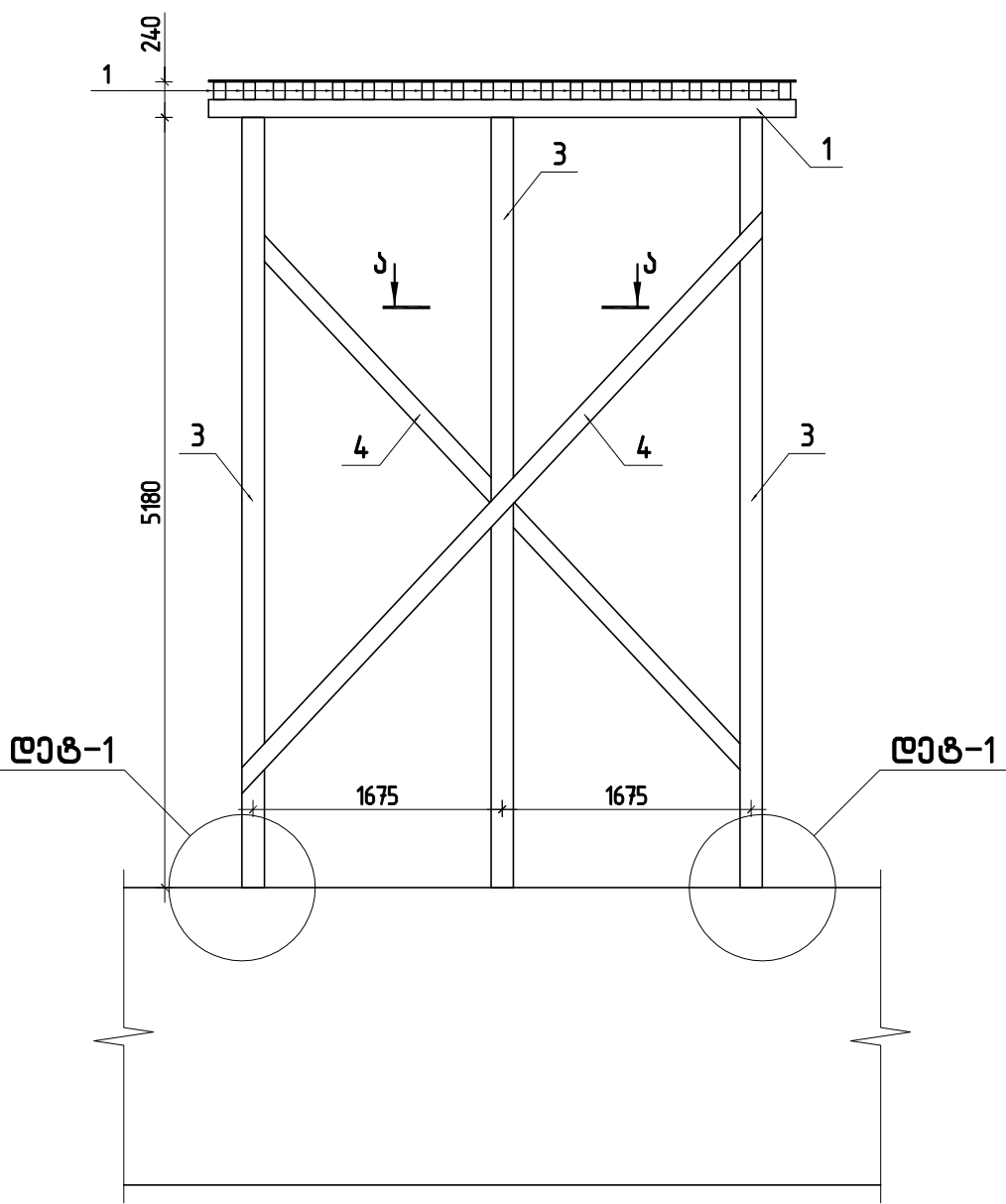
ჭრილი 2-2



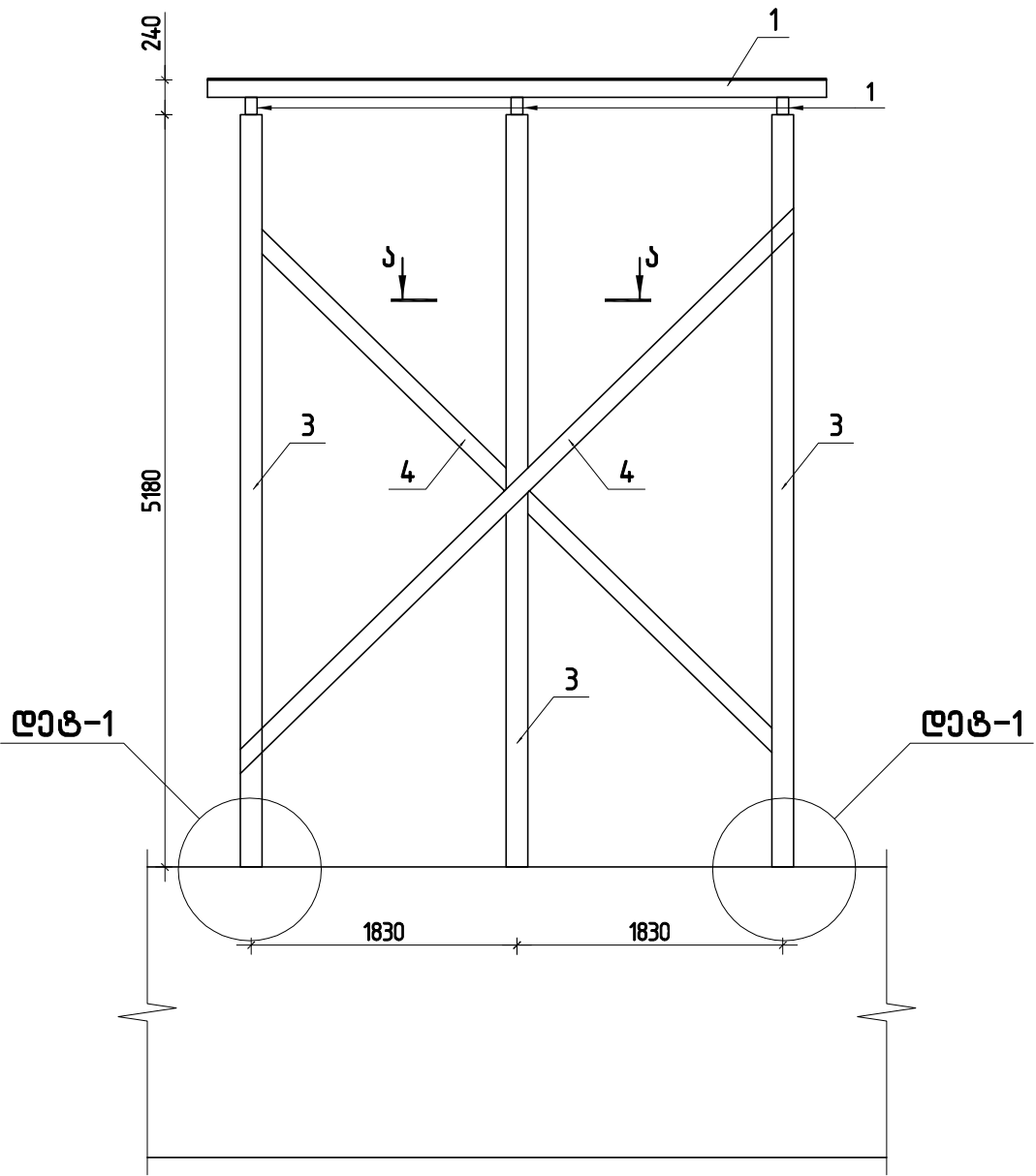
ჭრილი 1-1



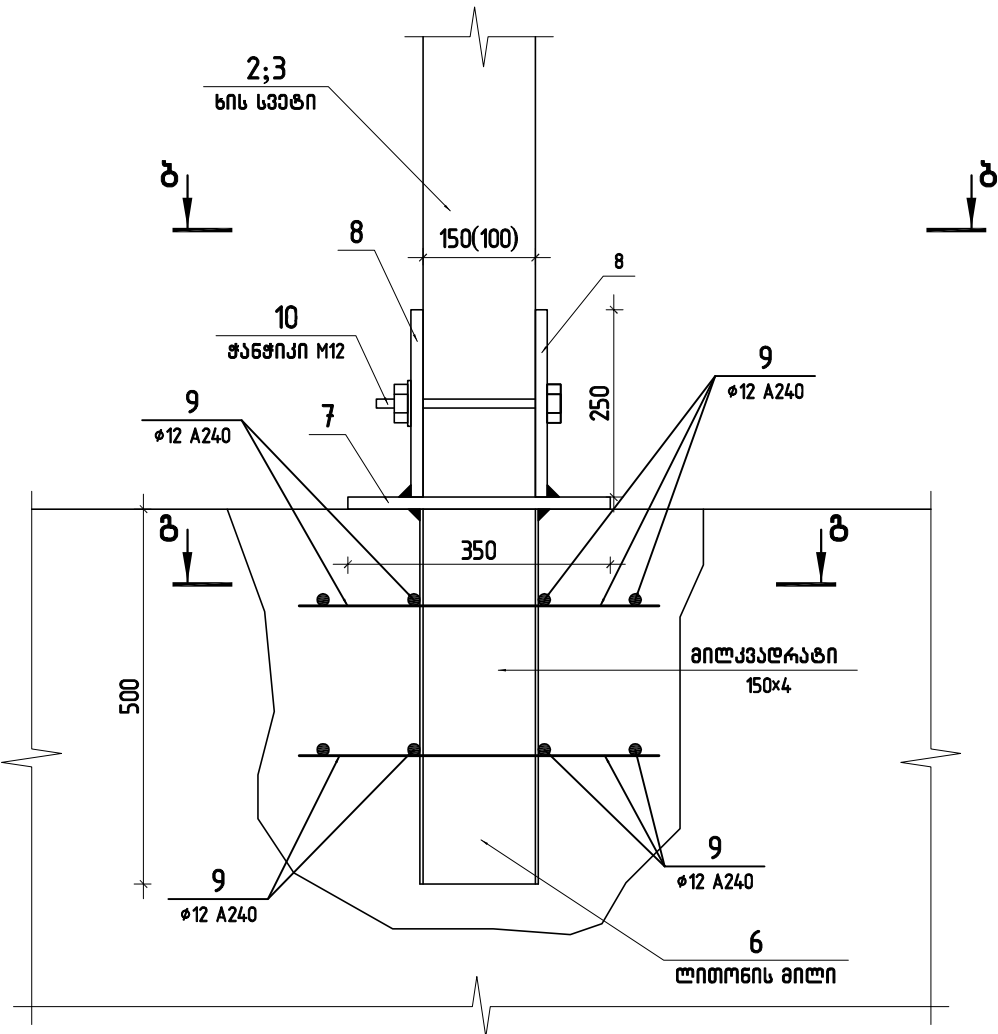
ხილ რაჩრმ R-1



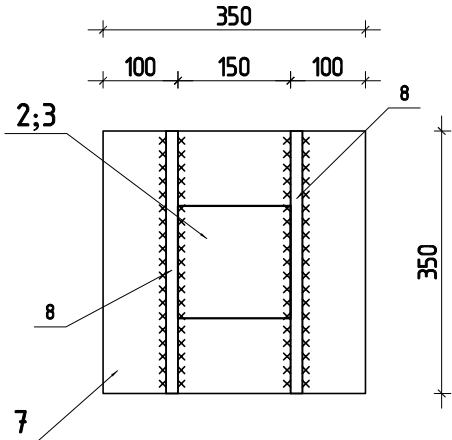
ხილ რაჩრმ R-2



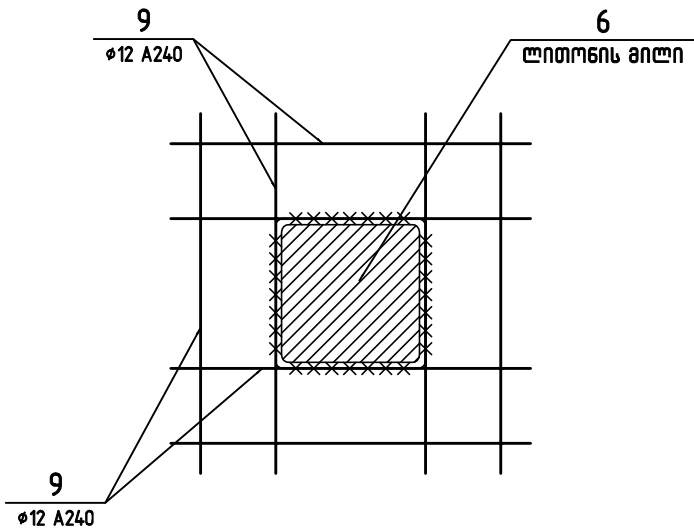
ღატალი-1



ხელი ბ-ბ

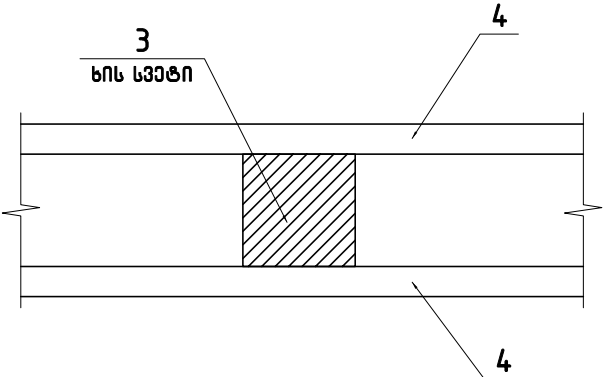


ხელი გ-გ



სის სპეციფიკაცია						
№	კვეთი, მმ	სიგრძე, მმ	რაოდ. ცალი	საერთო სიგრძე, მ	მოცულობა, კუბ მ	
					ერთის	საერთო
1	80 × 120	110415	1	110.4	1.060	1.06
2	100 × 100	20860	1	20.9	0.209	0.21
3	150 × 150	49610	1	49.6	1.116	1.12
4	40 × 120	51196	1	51.2	0.246	0.25
5	80 × 150	23319	1	23.3	0.280	0.28
ჯამი						2.91

ხელი ა-ა



კოფ.	შენიშვნა, სტანდარტი	დასახელება	რაოდ.	მასა კგ	მასა სულ კგ
6		□ 150×150×5 l=500	14	9.00	126.00
7		-350×350×12	14	11.54	161.55
8		-250×250×12	28	6	164.84
10		ბოლტი M12	14		
9		φ12/A240 l=107520	1	95	96
		ჯამი; SUM			548