



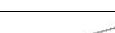
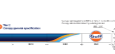




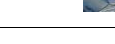







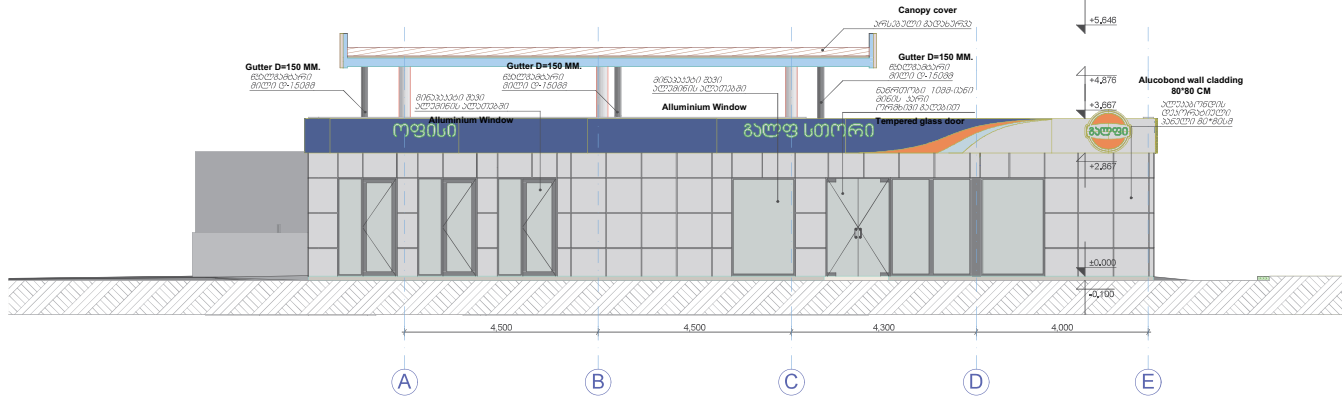
GULF

STATION : Fortuna (GULF, GEORGIA, TBILISI)

Position	Name	Technical description	Unit	Quantity	Unit cost, \$	Cost, \$
<b>Building</b>						
1		Frieze	The frieze of the building, 800 mm high, made of aluminum flat panels with polymer coating. Complete with substructures. Installation of panels without visible fasteners.	m2	25.60	
2		3D letter (sign)	Molded letters "Gulf Store" embedded in the frieze of the building (English) the front panel is made of 3mm acrylic. Internal LED illumination with LEDs (Cree LEDs). Set of 9 letters. Logotype and illumination must be completed according to IP 66 standard.	piece	9.00	
3		3D letter (sign)	Molded letters "Gulf Store" embedded in the frieze of the building (Georgian) the front panel is made of 3mm acrylic. Internal LED illumination with LEDs (Cree LEDs). Set of 9 letters. Logotype and illumination must be completed according to IP 66 standard.	piece	9.00	
			Sheathing of the walls of the building with alucobond 4mm flat panels. Complete with a subsystem for attaching to building structures and hardware, made by galvanized steel. Insulation between wall and alucobond must be completed with 10mm rockwool. Installation of the facade system without visible fasteners.	m2	63.00	
4		Escarpments	Sheathing of window and door openings on the building is made of 1.8 mm thick aluminum with a olumer coating. The special design of slopes with the use of aluminum extrusion profiles ensures the absence on the front surfaces. The window (door) slope is volumetric. Fastened by means of the P-A08 profile, which ensures the absence of hardware on the front surfaces.	m2	16.02	
		Mood Lighting	Strobe with LED illumination for illumination of the frieze of the building made of trapezoidal plastic profile with LED lighting	M	32.00	
5		Parapet	Parapet 700 mm wide made of galvanized steel 0.5 mm thick. Without an internal metal frame. Fabrication at a construction site.	m3	22.40	
<b>Total:</b>						<b>0.00</b>
<b>Canopy</b>						
1		Frieze	The frieze of the canopy is made of aluminum flat panels, with a polymer coating, h=200 mm. The orange and blue waves made of 48MM acrylic molded panels with internal LED backlight, waves and illumination construction must be completed according to IP 66 standard. Complete with a subsystem for attaching to metal structures of the canopy and hardware made by galvanized steel. The possibility of service is provided. All hardware with an crane mount is painted in the color of the panels.	m2	47.20	
2		3D letter (sign)	3D sign on the facade of the Canopy. Made of molded acrylic with UV printing and applique. With internal LED lighting. English sign. Signand illumination elements must be completed according to IP66 standard.	piece	1.00	
3		3D letter (sign)	3D sign on the facade of the Canopy. Made of molded acrylic with UV printing and applique. With internal LED lighting. ARMENIAN sign. Signand illumination elements must be completed according to IP66 standard.	piece	2.00	
4		Ceiling	Suspended ceiling made of galvanized steel 0.7mm thick consisting of: white panel 325 mm wide, RT docking profile, metal frame made of galvanized pipe and fittings, hardware.	m2	308.00	
5		LED lighting	The LED lamp is built into the suspended ceiling. Rectangular. For external use. The degree of protection is IP66. The body is cast aluminum. The luminous flux is 10600lm, the color temperature is 5000K. Power consumption - no more than 100 watts. Operating temperature - 30...+50. Easy removable design for maintenance and replacement.	piece	16.00	
6		Parapet	The parapet is made of galvanized steel 0.5 mm thick, with locks. Without an internal metal frame. Made on the construction site.	m2	41.23	
7		Pillar cladding	Covering of the canopy support of square section, made of aluminum flat panels with polymer coating. Complete with a subsystem for attaching the skin to the metal frame of the canopy. The height of the supports is determined by the height of the canopy, the sweep depends on the size of the core of the support. Height 4.75m, 6pc	m2	96.90	
8		Information box	The information cantilever double-sided box. The box plates are made of molded plastic with a seal or applique, complete with a metal frame. With internal illumination by LEDs along the contour. Logotype and illumination must be completed according to IP 66 standard.	piece	4.00	
9		Totem	The price stete is 6000 mm for 5 types of fuel Two-string. Single-support. The panels of the stete under the logo are made of 1.8 mm thick aluminum with a polymer coating. The sign "GULF" is a light molded invoice. It consists of white-milk acrylic glass with UV-printing. The internal LED-illumination is made by white light-emitting diodes, the counter-illumination is made by blue LEDs. The advertising panel is made of aluminum with a polymer coating with an internal LED backlight. The price panel is made of tempered FLAT glass with a thickness of 4 mm. The price lines are made in a polymer-coated housing, illuminated with white LEDs. The types of fuel are made in the form of a replaceable plate made of silicate tempered glass with an application. The illumination of the plates is made by white-glow LEDs. The side light profile is made of bent plastic with yellow-glow LEDs. Support for the stete: welded metal frame, round section. The frame elements undergo shot blasting, stripping, followed by degreasing of the surface, and additional treatment of the welds with an anticorrosive primer containing zinc. Anticorrosive protection of structures is carried out by applying a zinc-containing epoxy primer, with a layer thickness of 75-150 microns and a two-layer polyurethane enamel. The stete is equipped with an IR remote control of price lines. With a mortgage. Price sign and illumination elements must be completed according to IP66 standard.	piece	1.00	
10		Protective arc: steel	Protective arc for installation in front of on the safety islands.	piece	4.00	
11		Trash bin	Combined service unit on a fuel platform made of polymer coated steel. Includes a towel holder, a washing station for washing glasses, a box for gloves and a garbage container.	piece	4.00	
<b>Total :</b>						<b>0.00</b>
<b>Transportation:</b>						<b>0.00</b>
<b>Installation :</b>						<b>0.00</b>
<b>Total cost:</b>						<b>0.00</b>

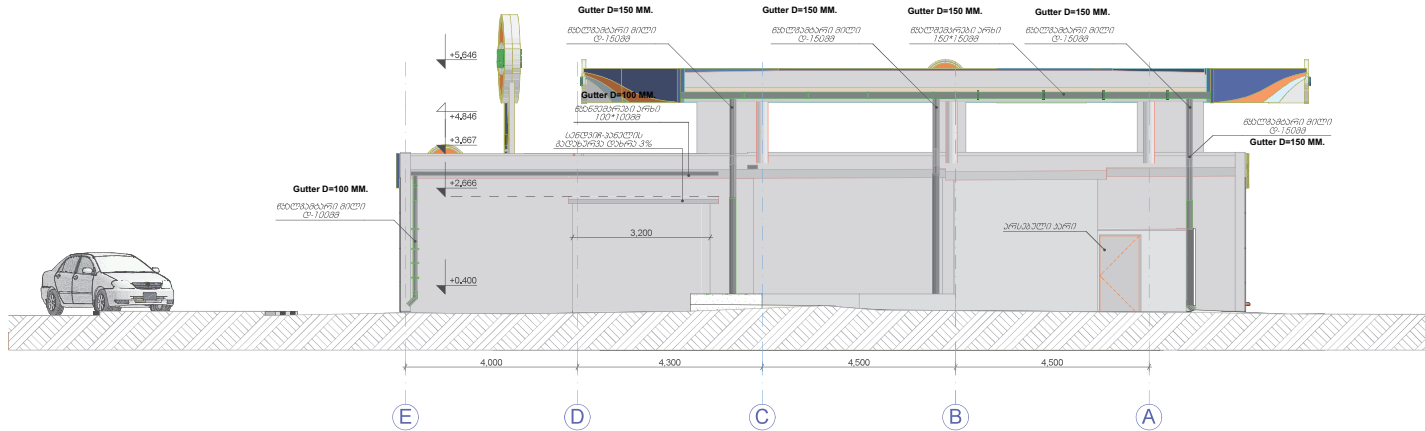
ფასადი A-E

FACADE A-E



ფასადი E-A

FACADE E-A



შ.პ.ს "სან პეტროლიუმ ჯორჯია"

კომპლექსი, კუთვნილ უძრავძეგლის სივრცეში  
 №172-ში მდებარე  
 შ.პ.ს "სან პეტროლიუმ ჯორჯია"-ს  
 მფლობელის უფლებით მიწის ნაკვეთზე  
 არსებული უძრავძეგლით სარგებლის  
 რეკონსტრუქციის პროექტი

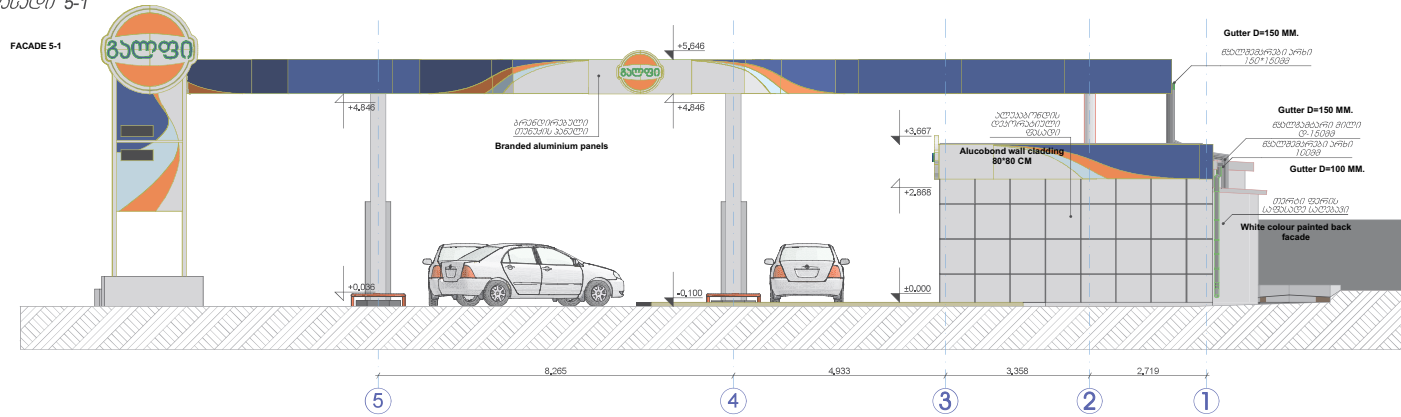
პროექტორი	თ. რევაზიძე	ბ. 508 54 73 73
მფარველი	ი.ბაგვაშვილი	
მფარველი	ს. მამუკაძე	

შენიშვნა:

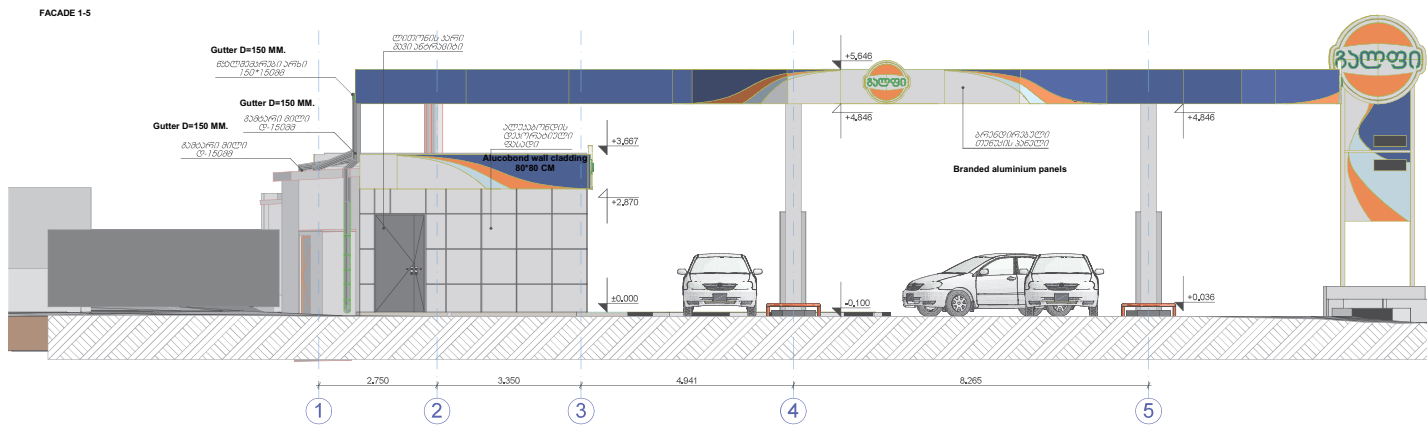


ფურცელი	13-23
ფურცლების რაოდენობა	A-3
მასშტაბი	1:100
თარიღი	2023წ

ფასადი 5-1



ფასადი 1-5



შ.პ.ს "სან პეტროლიუმ ჯორჯია"  
 ქ.თბილისი, ვაჟა-ფშაველას გამზ. 67/23/60  
 №172 - 80 ბიუჯეტი  
 შ.პ.ს "სან პეტროლიუმ ჯორჯია"-ს  
 მიერ შედგენილი არსებული შენობის რეკონსტრუქციის  
 პროექტის არსებული პროექტის ნაწილია.

პროექტი	თ. რეზაბერი	ფ. 5/5 54 73 73
შეამუშაო	ნ. ბაგრატიანი	
შეამუშაო	ს. ბაგრატიანი	

შენიშვნა:

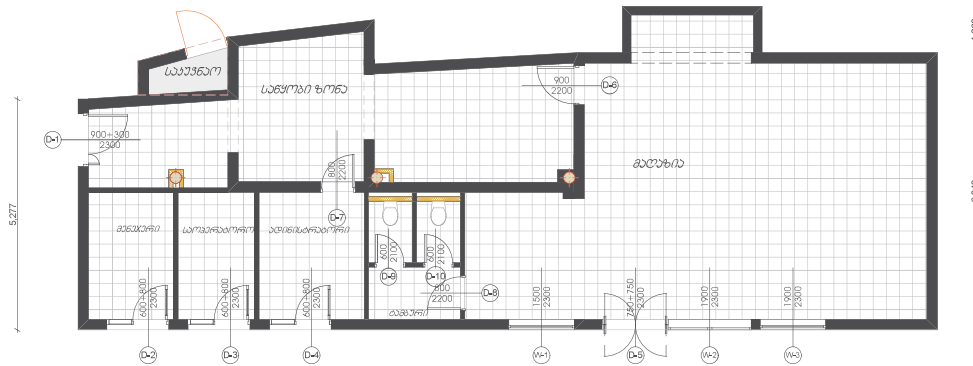


ფურცელი	14-23
ფურცლების	A3
მასშტაბი	1:100
თარიღი	2023/6



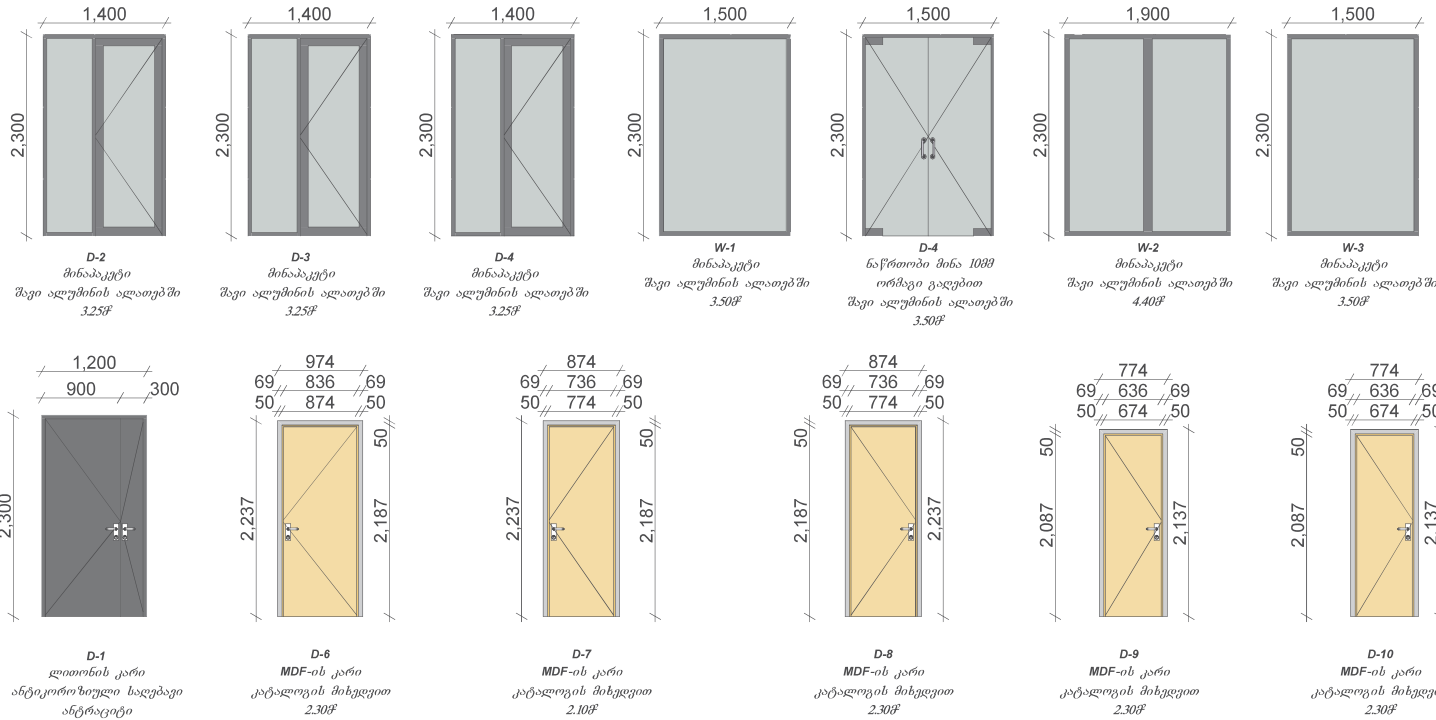
ბარ-ფაჩარების მოწყობის გეგმა

DOORS AND WINDOWS



DOORS AND WINDOWS SPEC.

ბარ-ფაჩარების სპეციფიკაცია  
შ 1:100



შ.პ.ს "სან ვებროლინა ჯორჯია"

ქ.თბილისში, ვაკეში უბანში, ვაჟა-ფშაველას სახელობის გამზ. N172 ში მდებარე  
შ.პ.ს სან ვებროლინა ჯორჯიის  
მფლობელის უფლებამოსილი წარმომადგენელი  
არსებული აპირებული საინჟინრო  
რეკონსტრუქციის პროექტი

პროექტორი	თ. რევაზია	დ. 596 54 73 73
შეამოწმა	ი. აბაშიაძე	
შეამოწმა	ქ. მამუკაძე	

- შენიშვნა
1. კარი-ფანჯრები ნერგები უნდა იქონიებოდეს მთლიანად.
  2. MDF-ის კარი უნდა იქონიებოდეს მთლიანად.
  3. სააბაზოს მანქანების მონტაჟის დეტალები.



ფურცელი	18-23
ფურცლის რაოდენობა	43
მასშტაბი	1:50
თარიღი	2023

## Technical task

1. Price board controlled by infrared remote control panel.
2. Price board glass is made with flat ultraviolet protective glass panels 4 mm.
3. Transportations, installation is included in offer.
4. Electrical supply 220V =-10 V
5. Warranty: 5 years for the panels and 3 years for electrical components
6. Illumination of the price board is changing according to day light.
7. Offered price include preparation of price board foundation and pouring of concrete for the anchor.
8. Offered price including delivery and installation at the destination (Petrol station)
9. Geographic data: 41.783462, 44.768754
- 10.LINK: <https://maps.app.goo.gl/gd68ksXedmr9Wdc8>
- 11.Address: TBILISI, GEORGIA, AGMASHENEBELI AVE. #172
12. All necessary measurements for design must be made by the manufacturer.
- 13.Data provided by the customer may not be accurate as all panels from all manufacturers are treated.
14. The price should include the installation of electrical cables 3\*2.5 to the lights and orange lighting.
15. Suspension frame for the frieze and ceiling must be made by galvanized steel.
- 16.The manufacturer must provide a 3D model and a technical passport in tender documentation.